

# TAUMATA SCHOOL



## Key Dates:

- 9 AUG: KOREAN VISITORS TO TAUMATA SCHOOL
- 9 AUG: TEACHING TEAM IN GREEN TO SUPPORT PRINCIPAL NEGOTIATIONS
- 12 AUG: MUSIC FESTIVAL TICKETS ON SALE
- 13 AUG: CHOIR REHEARSAL NUMBER 2
- 15 AUG: PRESCHOOL VISIT 2



Nga mihi nui kia koutou katoa.  
Warm greetings to you all.

The start of Term 3 indicates that we are half way through our first year of operation, and whilst we are clearly "**a work in progress**", there is much to be grateful for and proud of.

This term we have welcomed a number of new families. A very warm welcome to the following children and their families:

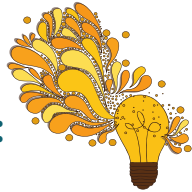
Abel De Bono, Piper De Bono, Eliot De Bono, Bailee Nicholas, Caden Gaylard, Harris Toman, Jaimee Rika, Julia Fang, Katie Ye, Oscar Nicholas, Zavier Gaylard, Hayden Burke, Arnav Dinoop, Aubrey Parry, Braxton Pavarno, Charlee Van Houtum, Dane Leslie, Emily Henderson, Flynn Smith, Isabella Shelford, Ned Jeavons, Peyton Sullivan, Samantha Lowe.

Our school now has over 210 students. What an exciting place to be! Whilst this number is bigger than initially predicted (in fact we were given a three-year build up prediction of 180 students) the Ministry of Education has reviewed our staffing, allowing us to recruit 3 additional learning coaches this term. A very warm welcome to Leonie Belk (joining us from Te Puke Intermediate), Sandi Valentine and Sharon Baggaley (joining us from Papamoa Primary School).

This term, the increased staffing has allowed us to reduce teacher/student ratios as well as offer additional support for students in literacy learning. Learning coaches have identified students who would benefit from additional support and these students are now involved in small group instruction. For many of the students involved the support is about 'filling gaps' in learning so that they can access the curriculum successfully. Should you have any questions about your child's involvement then please contact your child's learning coach.

Finally our conceptual inquiry for this semester (Terms 3 and 4) is "Our Place". Each learning studio has a slightly different interpretation of this focus but the big ideas are based around understanding what it means to be kaitiaki (caregivers) of the world around us, what things/resources are evident in our local community, what makes up a community and how we can be active contributors to our community. The children are excited as too are our learning coaches.

## Spotlight on Learning:



Schools by their very nature can sometimes present an 'imperfect structure' for learning. One constructed with a need for efficiency as opposed to effective learning.

Traditionally schools have been focused on efficiency. Students enter as 'batches' of learners that progress through the years in a systemised way and exit the conveyer belt of learning at the end of secondary school - hopefully 'full' of the knowledge imparted by experts along the way. Ken Robinson has a famous clip that details this more fully called "Changing Education Paradigms" However we now know that education and schooling needs to be more than that.

In order to raise the bar in learning it is important to have a definition of learning and a clear 'shared' vision for the school.

At Taumata School considerable time was spent consulting with the school community around "What does powerful learning look like?" and "What skills, competencies and capabilities do you want your children to have by the time they leave Taumata School?". Some of the ideas communicated are evidenced in the image below but the essence of these contributions are captured in our learning principles. Our community said they wanted children to be collaborators (work with others), be creators (value creativity and curiosity), to be involved in real authentic learning, to be participants in the learning journey as opposed to passive vessels to be filled, and that they learn resilience and tenacity - or our interpretation - have grit!



Policies are integral to the successful running of a school because they provide guidelines, rules and expectations for learning, health and safety, accountability and educational achievement. At Taumata School we use an online policy and procedure service called school docs. You can access any of our policies and procedures online any time, any where by visiting [www.schooldocs.co.nz](http://www.schooldocs.co.nz), and searching for Taumata School. The username is (**taumata**) and password is (**empowered**). At various points in the year we will undertake a review and ask for your input into the effectiveness of certain policies and procedures. These will be communicated through either a newsletter or Linc Ed.

## Primary Principal Negotiations:

As you may be aware, at the end of Term 2, after considerable negotiating, Primary and Secondary teachers agreed to the offer presented by the Government. This was a major step towards valuing our teachers for the role they play in shaping the future of New Zealand. Unfortunately the offer presented showed little value for the work of Primary and Intermediate Principals and was rejected. This means that all Primary and Intermediate Principals are currently engaged in a partial strike (disengagement with the Ministry of Education).

Recently an open letter was published in major newspapers (signed by Boards of Trustee Chairpersons) appealing to the Government to present a new deal that values the significant workload of Primary Principals. The request asks for pay parity with Secondary Principals and asks the Government to act swiftly.

On Friday 9th August a National Day of Support is proposed where our Taumata teaching team will be wearing Green to highlight their support for Primary Principals in their ongoing negotiations.

## After school pick up:

- Our school carpark and drop off zone has become a problem when monitoring the safety of children as they exit the school. Whilst some of this may be attributed to the increase in student numbers and the use of parking by contractors working on the school site; a number of the issues arise from misuse of car parks, drop off zone, parking on the footpath and a lack of patience and planning.

School carparks are notorious for being congested, however it is important that common sense prevails. Please read through our guidelines on the use of the carpark and drop-off zone.



The area directly outside the office area is a Drop-Off Zone:

- please do not exit your vehicle
- pull as far forward as possible
- if your child does not exit swiftly then perhaps do another loop of the carpark to allow space for another parent
- for older children perhaps they can meet you on Mortlake Heights



Please do not park on the curb of the entry to the school. Parking in this area reduces 'free-flow' of the pick up zone. Please do a lap of the drop off zone or carpark and come around again.



At Taumata School we have 3 accessible carparks. These carparks are for individuals who have severely restricted mobility and as such display a mobility parking permit. Please ensure these spaces are left for those members of our Taumata whanau that actually require them.



Please do not park on the footpath at all. Parking on the footpath creates a risk to the health and safety of our students and whanau.