

# TAUMATA SCHOOL



## Key Dates:

- 7 AUGUST - SCHOOL DISCO: JUNIORS 5:30PM; SENIORS 6:30PM
- 11 AUGUST- TOUGH GUY/GAL CHALLENGE
- 11 AUGUST: VISION & HEARING TESTS
- 17 AUGUST /19 AUGUST - YEAR 7 CAMP
- 21 AUGUST - TEACHER ONLY DAY
- 24 AUGUST - POWHIRI FOR NEW STUDENTS
- 26 AUGUST: TAUMATA 1010 FOR NEW FAMILIES TO TAUMATA SCHOOL
- 15-16 SEPTEMBER: TALE OF DILBERT CLANCY - BETHLEHEM COLLEGE THEATRE
- 25 SEPTEMBER; END OF TERM 3
- 
- 

## Message from the Principal:

*Genavier Fuller*

Nga mihi nui whanau

If you have had a chance to wander through our school recently you will notice that all of our learners are preparing for our production "The Tale of Dilbert Clancy".

The decision for a whole school production is never an easy one due to time commitments and resource requirements however during consultation there was a clear demand for a focus on The Arts - particularly music and drama and also to engage more in 'memory-making moments. As a result we are excited about Taumata School's first ever whole school production. Further details about show times and tickets will be out in the coming week; but as communicated previously diary the show dates: Tuesday 15 September and Wednesday 16 September.

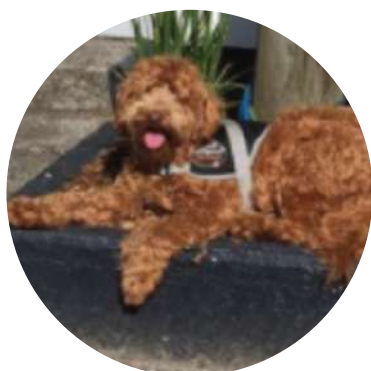
Last week five members of our team had the opportunity to spend time visiting recently established schools in Christchurch. Christchurch is a city experiencing rebuild and growth; and as such is one of New Zealand's high educational growth regions. During the week we were hosted by Knightstream (opened in 2019); Ararira Springs (2019); West Rolleston School (2016); Te Matauru (2020) and Ao Tawhiti (Discovery school merge and rebuild).

The purpose of the visit was to connect with other leaders and share strategic decisions that support educational

growth and achievement. Whilst the team is currently working through reflections and using these to inform our 'next steps', some of the important things noted were:

- the different rates of growth for each school. Schools that opened at a similar time to Taumata School are growing but at a slower rate to our school.
- the common commitment of schools to use research to inform the philosophy and practices of the schools. All schools are committed to an innovative approach to learning as opposed to embedding 'traditional' ways of teaching and schooling.
- the strong connection to Ao Maori and the principles of The Treaty of Waitangi. The belief that we need to reflect what it means to be a school in Aotearoa New Zealand
- a desire to work in partnership with the community and create a learning organisation the community can be proud of. All schools had this at the heart.
- a focus on more than Reading, Writing and Maths... which is informed by neuroscience. All schools are committed to empowerment and creating confident, capable, curious citizens.
- a strong investment in school culture and collaboration. Deliberately recruiting educators with the X factor.

## Murphy: Our Therapy Dog



We would like to formally introduce you to Murphy The Therapy Dog.

Murphy is a two year old Labradoodle who has been trained by Wendy Isaacs (Therapy Dogs NZ) to be an emotional support dog.

Murphy is able to support people by:

- companionship
- no expectations
- sensory input
- teaching compassion, understanding and unconditional love
- teaching dog safety

Murphy will be introduced to our Taumata students during Week four of this term.

## Taumata School Enrolment Policy:

Taumata School has a clear enrolment zone which ensures we appropriately manage our rate of growth and meet the needs of our immediate community. Currently there is a strong desire for families living outside of our school zone to enrol their children at Taumata School, therefore it requires careful management and monitoring by the Board of Trustees.

We appreciate that sometimes circumstances change and families find themselves relocating in an area out of our school zone. We are committed to providing continuity for any children already attending Taumata School and ask that you inform us immediately of any change in address. However it is important to be clear that whilst we are able to meet the needs of currently enrolled students; we will not be able to offer a space for future siblings who live out of zone. If you have concerns or queries around this - please do not hesitate to ask.

In addition to this, to safe guard this process we will also be following up any 'temporary residential arrangements' and statutory declarations. Please understand the intention is merely to ensure we are meeting the regulations of the Ministry of Education.

# School Carpark and Drop Zone

As we grow we are fielding common questions about our school carpark and drop off zone. We have raised some of these concerns with the designers preparing for Stage Two, but thought we would answer those questions that are frequent.

School drop off zones are a designated area to support flow of traffic in high-demand times. Whilst every attempt is made during the design phase to plan for 'user-friendly' and suitable space, the success of the area is dependent on adult behaviour - courtesy, common-sense, kindness and understanding. Here are some of the questions we are often asked.

## 1 Why isn't there designated parking on Mortlake Heights Loop Road?

The council consents around roading decisions determine where the yellow no parking lines go. These decisions were made when consents were processed around traffic flow for this area.

In working with travel safe (council) they would like to see more students walking, biking and scootering to school - promoting active travel.

## 2 How many carparks does Taumata School have?

Taumata School has 60 carparks which were allocated based on the master roll build of 650 students. 3 of these carparks are accessible carparks.

## 3 Why do teachers take up most of the carparks?

We currently have 28 people on our team who are employed in either full time or part-time capacity. A condition of resource consent is that employees have an adequate solution for 'off-street' parking to minimise traffic flow concerns. As such they park in our carpark.

Due to the early start time of some team members and late finish it is also important that we provide a secure, well-lit solution. >>>

## 4 How does the drop off zone work?

Ideally the drop off zone is a 'no parking' area - however the current marking shows defined spaces. We are looking at a new solution that provides no fixed parking and acts more as a 'flow-through' area to collect. If your child is not there for pick up then you would travel through the area and out again.

4 &gt;&gt;&gt;

## 5 Why doesn't Taumata School provide a bus service? >>>

Our school has an enrolment zone which captures it's immediate community; and the Ministry of Education has determined that there is no need for a bus service.

5

## What can I do to manage school drop off and pick up?

If your child is an older student (Years 4-8) we suggest you encourage them to walk, bike or scooter to school. Empower them by developing a strategy together and give them strategies to cross the road and be safe.

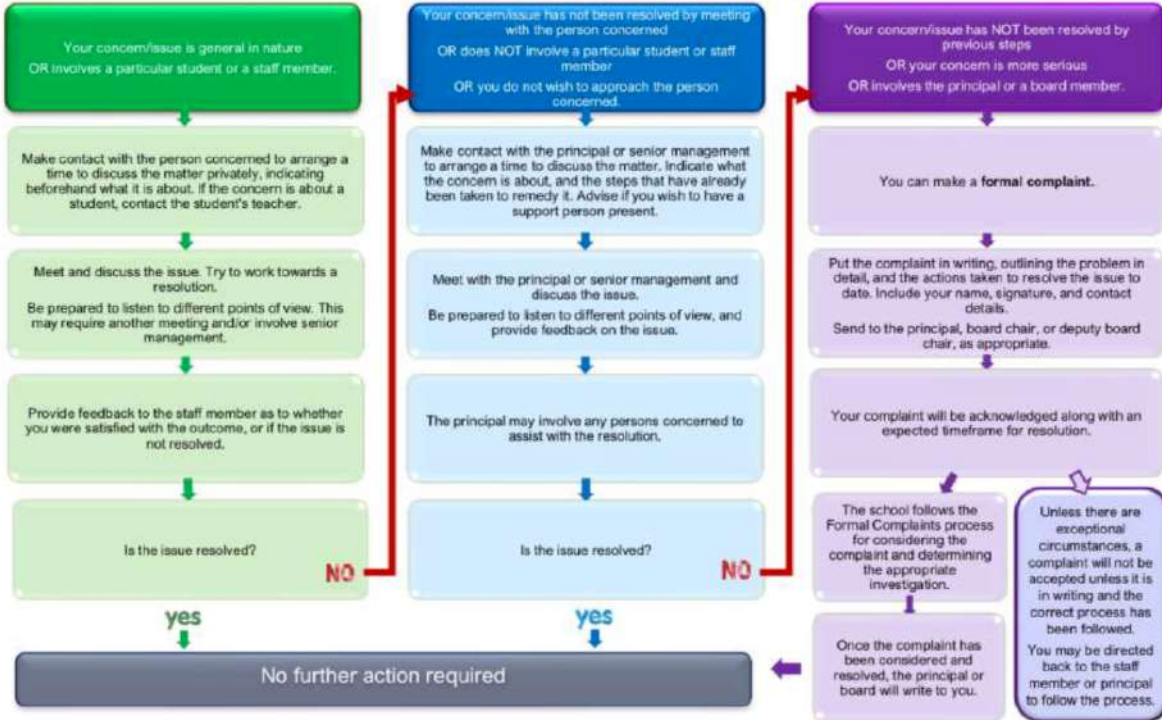
If they need to be picked up we suggest that you identify an alternate pick up area (perhaps Mortlake Heights/Kennedy Road or perhaps The Lakes shops). This would be more time friendly than the drop off zone on busy days.

For younger students we encourage that you make a plan for pick up either in the drop off zone and talk to them about the designated wait space... and that if you are not there you are not far away.

# Channels for Communication:

## Concerns and Complaints Process

Most concerns can be resolved informally by discussions with the people concerned.



This flowchart aligns with the school's Concerns and Complaints policy and procedures.

**BASEUP**  
**OMOKOROA COASTAL CHALLENGE**

**SUNDAY 18th OCTOBER 2020**

**1.5km Kids Dash, 5km, 10km and 15km Walk/Run, and 21km Run**

**EARLYBIRD PRICING AVAILABLE UNTIL 31 AUGUST**

Register online now:  
[runrunrun.co.nz](http://runrunrun.co.nz)

Thanks to our sponsors:

## Let's keep everyone safe

Visiting your school or early learning service

- Please follow these simple rules:
- ⓘ
**Tell us your plans early**
    - Let us know early that your child will be attending so we can plan for them.
  - ⓘ
**Essential visitors only**
    - Please ensure your visits to the school or early learning service are essential.
    - Use the sign-posted entry point.
  - ⓘ
**Drop off and pick up your child at the time you are given**
    - Your early learning service or school may require you to drop off or pick up your child at a particular time.
    - Please help with staggered arrival and pick up times, if required.
  - ⓘ
**Record your visit in the register**

There are two registers:

    - **Visitor register** - All site visitors must be recorded in the visitor register, which will record your name, time in and out, date, phone number and physical address. This assists with contact tracing if necessary.
    - **Contact tracing register** - Your school or early learning service also keeps a register that identifies which children and adults are in each teaching space.
  - ⓘ
**Maintain a 2 metre distance at all times**
    - Keep any on-site visit short.
    - Maintain a 2 metre distance from those who are not part of your household, workplace or school bubble.
  - ⓘ
**Sick children must stay at home**
    - Please keep children at home if they are sick. A sick child will be sent home.
    - If your child is at higher risk of severe illness from Covid-19, they must stay at home.
  - ⓘ
**Practice good hygiene**
    - Wash and dry your hands, cough into your elbow, don't touch your face.
    - There's hand sanitiser available around the school or early learning service. Please use this if you touch surfaces.
  - ⓘ
**Covid-19 cases**
    - You will be advised if your school or early learning service is connected to a confirmed or probable case of Covid-19. You will be advised of any actions to be taken.
    - The site must close for 72 hours to allow contact tracing and cleaning. They may be physically closed for a further 14 days.