

TAUMATA SCHOOL



Mauao 2,
Park Trip

Key Dates:

TERM 2: 3 May - 9 July (10wks)

- **21 May:** Pink Shirt Day
- **24 - 28 May:** Small sticks, full school
- **31 May:** Yr 0 - 6 Cross Country, sausage sizzle & juices for sale
- **1 June:** Mauao Structured Literacy, 3 - 4pm
- **2 June:** Tall Poppies, Cross Country, Yr 7&8 (offsite)
- **2 June:** Mauao 1b Walk
- **2 June:** Mauao 1a Walk
- **4 June:** Teachers Only Day (school closed)
- **7 June:** Queens Birthday (school closed)
- **9 June:** 101 New & Existing parents 6 - 7pm
- **16 June:** NYLD Yr 7 Students
- **21 June:** Yr 7 Boostrix Vaccinations
- **24 June:** Student Leaders Experience
- **25 June:** Yr 7 Boostrix Vaccination catch up
- **25 June:** Otenewainuku Otenewainuku Trip
- **29 June:** Puwhenua & Otenewainuku Learning Showcase
- **30 June:** Mark Osborne Parent session, 6-7pm
- **2 July:** Teachers Only Day (school closed)
- **9 July:** Last day of term 2
- **26 July:** Term 3 Begins

Message from the Principal:

Principal Gen Fuller

Kia ora, Talofa, Malo e leleli, Kia orana, Fakalofa lahi Atu, Taloha Ni, Ni sa bula, 你好, Namaste, 안녕하세요, Hola.

Firstly, **Eid Mubarak** to those of our community who have just completed the month of Ramadan. Ramadan is the ninth month in the Islamic calendar where many Muslims engage in fasting, prayer, and reflection. The end of Ramadan is often celebrated with a festival or feast and referred to as Eid Al Fitr.

Learning Celebration Hui: This week we welcomed many parents, whanau into learning spaces to hear about progress in learning against the New Zealand Curriculum, share celebrations and challenges and discuss next step goals. This partnership is integral in supporting your child through their personal educational journey at Taumata School.

The Learning Celebration Hui are just one way in which we report to parents. Whilst parents/whanau are welcome onsite to discuss learning at any time, these hui are a formal connection between learning coaches, students and parents.

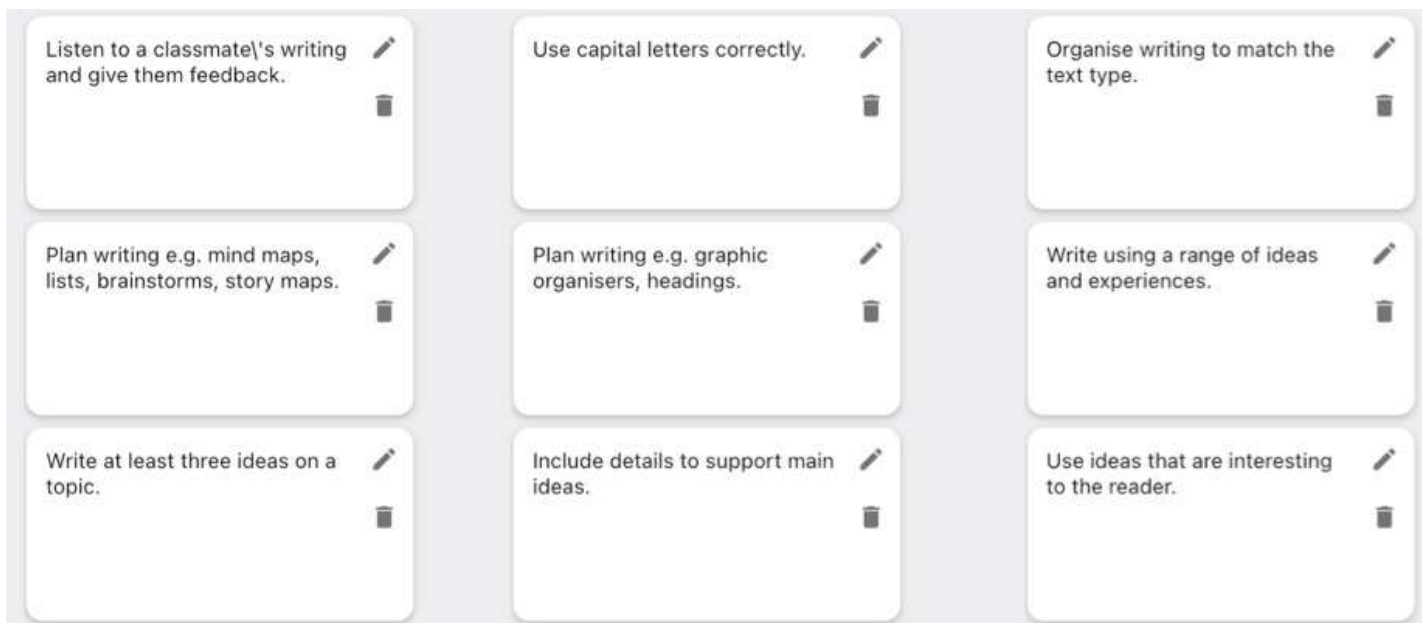
Other ways in which we share progress are:

- Student led conferences: where students do the sharing of their progress, examples of work they are proud of and goal setting
- HERO progressions and goals: online where the progressions students are working on are visible and progress against the curriculum levels are visible
- Toku Ako page (HERO): where students will shortly be sharing examples of their work
- Tier 1 and Tier 2 support hui (for children who receive additional learning support)

Continued...

Our student management system (SMS) - HERO is the way in which our ongoing real-time reporting is presented. Real-time reporting allows parents/whanau to see aspects of the curriculum achieved, and progressions currently being worked on in an online, timely manner. Traditionally a report would have been sent home at six monthly intervals however, often crafted, proof-read and then placed into the formal report weeks before being shared with parents. On occasions the information was weeks old and the reporting was considered an 'event' at two key points in time.

However now, with shifts in technology, we are able to use the progressions within teaching and learning programmes, update progress online and set the next step goals which become immediately available to parents. Should you have concerns about the reporting, your child's progress or need assistance understanding the information please connect directly with your child's whanau teacher. If you are still not satisfied please make a time to connect with Jacq Price or Mike Rankin. Below you will see examples of a few of our Level 2 writing progressions.



Pink Shirt Day

In Aotearoa, Pink Shirt Day works to create schools, workplaces, communities, and whānau where everyone feels safe, valued, and respected.

To effectively prevent bullying it's important for everyone (school leaders, learning coaches, students, whānau, and community) to have a shared understanding of what is bullying.

Is it bullying?

When someone says or does something unintentionally hurtful and they do it once, that's...

Rude

When someone says or does something intentionally hurtful and they do it once, that's...

Mean

When someone says or does something intentionally hurtful and they keep doing it - even when you tell them to stop or show them that you're upset, that's

Bullying

It was great to see so many students in PINK!

Thank you
for your
support - we
raised
\$446
for the
Mental
Health
Foundation



PRESENTER: MARION KIRBY, LEARNING MATTERS

STRUCTURED LITERACY INFORMATION SESSION

**Yr
1&2**

**Yr
1&2**

DATE: TUESDAY 1ST JUNE
**VENUE: TAUMATA SCHOOL
HALL**
TIME: 3.00 PM- 4.00PM

STEAM at Taumata School

At our school, we value

Learner Agency - Grit - Collaboration - Creativity - Authentic Learners

What is STEAM?

Rather than teaching Science, Technology, Engineering, the Arts and Mathematics as separate and discrete subjects, STEAM integrates them into "interdependent" learning units based on real-world applications.

Why STEAM?

STEAM learning applies meaningful maths, science, and technology content to solve real-world problems through hands-on learning activities and creative design. STEAM-based learning programmes equip students with the skills and knowledge needed to thrive in the 21st century.

STEAM learning will not only produce tomorrow's designers and engineers; it will develop innovative mindsets and the ability to problem-solve, ensuring that our students become creators of technology, not just passive consumers.

To empower students for life.

What does STEAM look like ?

STEAM learning is inquiry

STEAM lessons are authentic and focus on real-world problems.

STEAM learning supports the NZ Curriculum

STEAM lessons apply maths and science.

STEAM learning builds tuaka-teina relationships

STEAM learning is hands on and artistic

STEAM at Taumata School

At Taumata School, STEAM learning is shown through our play based and project based learning approach. Where students have **agency** to generate their own **authentic** questions, work **collaboratively** to solve problems, show **creativity** by thinking outside of the box and show **grit** to lead their own inquiries.

This could look like:

Creating a zoo using a variety of materials, planning their design, thinking about what each animal requires, creating a prototype, reflecting and making changes.

Proposing a pump track at Taumata School. Researching what makes a great pump track, creating a preliminary design using measurements and mapping an area of the school, writing a letter of interest to the board of trustees, seeking the advice of professionals and further finalising their design through exploring materials, creating models and different layouts.

Empowered to learn, empowered for life.

Otanewainuku - Next Steps



This week we welcomed six senior college students from Tauranga Girls and Tauranga Boys College to visit Taumata School.

This is one of the first steps to establishing our connections and relationships with our local colleges.

Over the year we will welcome visits and share information from our local colleges with our Yr 8 students and their families to help with the transition between schools.

This is an exciting time and we look forward to spending more time with our connecting students.

Thank you to the Student Ambassadors for their warm welcome and ensuring our visitors had an informative tour of the school.

HEG - Power Generation

In week 2 of this term, Genesis Energy loaned us the use of their HEG (Human Energy Generator).

This device enabled our students to understand how much human power was required to light a bulb by spinning the pedals with their hands to produce power.

Students were able to see and also feel the difference in power required to light up an old school incandescent bulb and a new LED bulb.

This fitted neatly into our Science week this week and as part of our STEAM activities throughout the year.

Thanks to Genesis Energy for their help.



Whanau Rōpū

Fenella Comesky - Chairperson

I am very pleased and proud to find myself in the role of Chairperson from the committee. This has been a simple transition that is testament to the wonderful team we have. I have two boys at Taumata school, in Matarawa and Mauao 1, as well as two teenage step-daughters. I hope to see you in and around school soon.

Brooke Marks - Treasurer

I am a mother of three girls, one in Otanewainuku, one in Puwhenua and one at kindergarten. I also work part time at Taumata as a Learning Assistant. I enjoy being part of the Whanau Ropu - it's a great way to be involved and give back to our growing community.

Jodie Robinson - Treasurer

Hi I'm Jodie. I am currently The treasurer and have been since the school open and I have a son Oliver and Matawara and live at the lakes with my husband Olly and Eva who goes to daycare.



If you are able to help with any events or would like to join the Whanau Rōpū please get in touch with the office!

team up with *taumata*

TREMAINS
Real Estate

Are you thinking about moving?

List your home for sale with me, nominate Taumata School and when your home sells - I'll donate Taumata School \$500

Contact me today to find out more.

Brent Bastin
Award Winning Sales Consultant
M 022 289 2647

brent.bastin@tremains.co.nz

Terms & Conditions apply
Tremains Real Estate BOP Limited Licensed Real Estate Agent REAA 2008

A NIGHT WITH
NIGEL LATTA
 CHILDREN'S SOCIAL AND EMOTIONAL COMPETENCIES

25TH MAY 2021

THE ATRIUM CAFE & CONFERENCE CENTRE
 252 OTUMOETAI ROAD
 7.30PM - 9.15PM
 DOORS OPEN AT 6.45PM

\$35

BOOK NOW
07 576 4649

OR GO TO
 EVENTBRITE.COM TO
 BOOK ONLINE

OPEYS ALL DAY KINDERGARTEN FUNDRAISER 



UPTON Electric Guitar School
GUITAR TUTION

Upton Electric Guitar School is your go to for all of your Guitar and Bass tuition needs! We offer both private and group lessons. We also tutor in schools throughout Tauranga.

What we do
 All lessons are held in our mobile truck which is fitted with state of the art recording equipment, effects and guitars. With a Bachelor of Teaching and Diploma of Music, Andrew is passionate about seeing every student progress and be the best that they can be.

Contact us today to find out more!
 020 400 78454
 info@uptonelectricguitarschool.co.nz
 www.uptonelectricguitarschool.co.nz




GOBSMACKED
MUSICAL THEATRE SCHOOL
LUNCHTIME WORKSHOPS

\$135 per term (\$15 per lesson)

TERM 2 SCHOOLS:
 PILLANS POINT
 ST MARYS
 TGA PRIMARY
 TAUMATA
 BELLEVUE
 OTUMOETAI

Sign up for a lunchtime lesson
 To register go to:
 WWW.GOBSMACKED.NZ




 **BAY MUSIC SCHOOL**

PATHWAY PROGRAM - 2021
 JOIN THE BAND TODAY!

Join today by signing up to a registration group at our website
www.baymusicschool.co.nz
 or baymusicschool@gmail.com

Foundation Course only \$199 per Term
 For Ukulele, drums, guitar, singing, bass and more!







UPTON Drum School
 FIND YOUR RHYTHM

2021 DRUMTRUCK LESSONS!

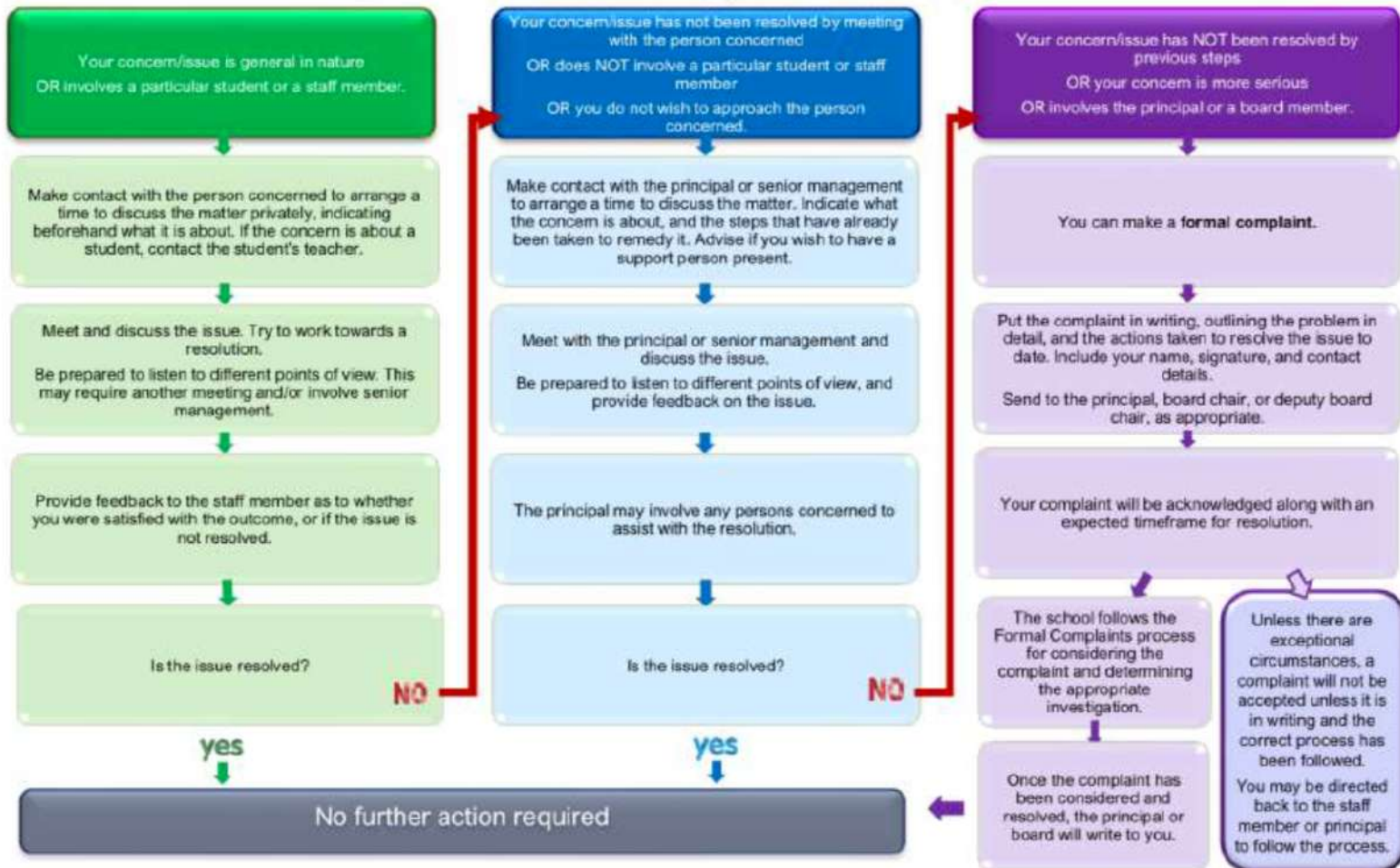
LEARN MODERN SONGS, GROOVES AND RHYTHMS, ALL DURING SCHOOL TIME! EVERY STUDENT HAS THEIR OWN ROLAND KIT, AND WILL LEAVE THE LESSONS WITH A SMILE AND A NEW SKILL!!

CONTACT
 INFO@UPTONDUMSCHOOL.CO.NZ TO SECURE YOUR SPOT!

Channels for Communication:

Most concerns can be resolved informally by discussions with the people concerned.



This flowchart aligns with the school's Concerns and Complaints policy and procedures.

Taumata Expectations for Parents

At our school, we value

Learner Agency - Grit - Collaboration - Creativity - Authentic Learners

Outside our Learning spaces we ...	Meet the children away from the door Wait out of sight Allow children to leave the learning spaces
Inside the Learning spaces we ...	Make an appointment to meet with the Learning Coaches Actively supervise preschoolers at all times Leave the spaces as you found them Check with Learning Coaches before preschoolers play with equipment Allow children to do things for themselves
Inside the admin block we ...	Wait patiently for someone to help you Be mindful of others working and wait quietly Be respectful at all times
Playground	During school hours check-in through the office before entering the school, except after 2:15 pm Keep bikes and scooters etc away from the playground and buildings Actively supervise your children
Carpark	Park in the correct area Follow all signs and directions Park away from the school whenever possible Encourage children to walk or ride to school
Communication - Learning coaches - Admin - Management - Other parents	Show respect at all times Contact the Learning Coach to see if they can answer your questions before Admin / Leadership Make an appointment to discuss concerns Talk directly to the person involved, not via Social Media Be aware of differing opinions Be solution focused and positive

School Docs

Our school policies are managed through School Docs and are available for viewing at anytime. You can access our policies and procedures via **Hero** or visiting: www.schooldocs.co.nz in the search bar type Taumata School. Enter our username (**taumata**) and password (**empowered**)

