

# TAUMATA SCHOOL



Mauao 2,  
Park Trip

## Key Dates:

### TERM 2: 3 May - 9 July (10wks)

- **12 May: Hannah Whanau: Learning Hui, 3 - 5.30pm**
- **12 May: Nourishing Fathers, 7-8pm**
- **19 May: Residents Meeting, hall, 7.30 - 9pm**
- **20 May: School finish 1.45pm, Learning Celebration Hui 2 - 7pm** (survey to be completed / booking T2, Wk 1)
- **21 May: Pink Shirt Day**
- **24 - 28 May: Small sticks, full school**
- **31 May: Yr 0 - 6 Cross Country**
- **1 June: Mauao Structured Literacy, 3 - 4pm**
- **2 June: Tall Poppies, Cross Country, Yr 7&8** (offsite)
- **4 June: Teachers Only Day** (school closed)
- **7 June: Queens Birthday** (school closed)
- **9 June: 101 New & Existing parents 6 - 7pm**
- **21 June: Yr 7 Boostrix Vaccinations**
- **25 June: Yr 7 Boostrix Vaccination catch up**
- **25 June: Otenewainuku Otenewainuku Trip**
- **30 June: Mark Osborne Parent session, 6-7pm**
- **2 July: Teachers Only Day** (school closed)
- **9 July: Last day of term 2**

## Message from the Principal:

*Principal Gen Fuller*

Kia ora, Talofa, Malo e leleli, Kia orana, Fakalofa lahi Atu, Taloha Ni, Ni sa bula, 你好, Namaste, 안녕하세요, Hola.

A very warm welcome to term 2, 2021 and a special welcome to our new families/whanau who joined us with a formal Mihi Whakatau on Monday.

As a school we are fortunate to have wonderful, strong connections with Ngai Tamarawaho that extend to supporting the transition of new families from manuhiri (visitors) to Taumata whanau. Matua Tu Piahana led our Mihi Whakatau alongside our very own Raina who was Kai Karanga. We also acknowledge Makuini (a new parent) who responded to the Kai Karanga on behalf of the new families and also Ben (new parent) who spoke to acknowledge the welcome.

During Matua Tu's whaikorero he highlighted the rich history associated with this area, the trials and tribulations of his people and the belief in a strong responsive partnership with Taumata School. We feel very privileged to have key figures such as Tamati Tata, Des Tata, Tu Piahana, and many others connected to our kura.

As we finish this first week of term 2, I draw your attention to our Learning Celebration Hui, in Week 3; and our Learning Showcase which culminates a semester of learning around Kotahitanga in Week 9. We value genuine learning partnerships and recognise the significant impact cohesive partnerships between learning coaches and parents can have on student achievement. By working together to achieve a common goal - the progress, achievement and well-being of your child - we have greater impact.

## Continued...

Therefore I encourage you to come along to our Learning Celebration hui where your child's learning coach will share progress, examples of celebrations in learning, samples of work to date and set goals alongside your child for the remainder of the year. In addition to this our Learning Showcase will be an evening where students and coaches pull together all learning and present an exhibition of learning for this first half of the year - we look forward to seeing you all there.

Don't forget to get your tickets to the Whanau Ropu's (PTA) Mothers Day movie. Our Whanau Ropu is committed to growing and connecting our community and this is a lovely opportunity to connect socially and enjoy time together as busy mums. A big thank you to our Whanau Ropu for their organisation.



Travel Safe to and from school:

Last term we had a focus on travelling to and from school; and more specifically guidance on how to use our school carpark and drop off zone. We have noticed a significant reduction in car park congestion and increased safety in the school drop off zone - thank you for your support in this area as our school continues to grow.

In working to reduce the traffic congestion we see an increase in students walking, biking and scootering to school. This is fantastic; and ideally what we want to see in our community however we have had a number of concerns reported to the office about student safety when crossing local roads. Below are some general tips that might support a conversation with your child/ren. We also encourage taking time to bike/scooter or walk the school route with your child - this will allow you to model/coach safe ways of crossing our busy roads.

How to stay safe when walking to school:

- Be aware and check at every driveway
- Always walk on the footpath
- Use marked pedestrian crossings if available
- When crossing the road without a pedestrian crossing use the following guidelines:
  - Be patient and cross the road only when it is safe to do so
  - Wait at least one step back from the kerb edge
  - Look and listen for traffic coming from all directions
  - When it is safe walk straight across the road (to the island kerb in the middle if available)
  - Whilst crossing, look and listen for traffic
  - Continue checking for traffic and walk swiftly to the other side

The area of continued concern is the crossing on Kennedy Road and Mortlake Heights/Te Ranga Memorial Drive Round-a-bout. We have expressed our concern to the local council and looking for ways to improve student safety in this area. If you are available to assist us with parent support in the afternoons we would love to hear from you.



## Student Ambassadors

An authentic opportunity has been presented to our student ambassadors to consult on the plans that have been developed for our outdoor spaces. These students spent time together to review, document and provide a real feedback to the leadership team, BOT and consultants - from a students perspective of what our spaces can look like and how it will be used by our students and families.



## Bag Hooks



A huge thanks to Sean Fullick (technology) and some of our senior students working with Sean to help prepare and complete the bag hooks. Looking proud of their achievement and helping everyone across the school! Thanks to everyone involved.

## School Uniforms: Coming Soon!



Coming Soon!!! School uniform items will be able to be purchased via the school website - using Stripe or Internet banking. These items then will be distributed to your child.

Ordering from our current supplier is now turned off!

We will update you via **Hero / newsletters** for further updates and information when this all becomes live!

Remember to name all uniform items, socks and shoes!

## A NIGHT WITH NIGEL LATTA

CHILDREN'S SOCIAL AND EMOTIONAL COMPETENCIES

# 25TH MAY 2021



THE ATRIUM CAFE &  
CONFERENCE CENTRE  
252 OTUMOETAI ROAD  
7.30PM - 9.15PM  
DOORS OPEN AT 6.45PM

**\$35**

**BOOK NOW**  
**07 576 4649**

OR GO TO  
EVENTBRITE.COM TO  
BOOK ONLINE

OPEYS ALL DAY  
KINDERGARTEN  
FUNDRAISER





**Taumata School**

**BAY MUSIC SCHOOL**

**PATHWAY PROGRAM - 2021**

**JOIN THE BAND TODAY!**

Join today by signing up to a registration group at our website  
[www.baymusicsschool.co.nz](http://www.baymusicsschool.co.nz)  
 or [baymusicsschool@gmail.com](mailto:baymusicsschool@gmail.com)

**Foundation Course only \$199 per Term**  
 For Ukulele, drums, guitar, singing, bass and more!



**UPTON Electric Guitar School**  
 FIND YOUR SOLO

**GUITAR TUTION**



Upton Electric Guitar School is your go to for all of your Guitar and Bass tution needs! We offer both private and group lessons. We also tutor in schools throughout Tauranga.



**What we do**

All lessons are held in our mobile truck which is fitted with state of the art recording equipment, effects and guitars. With a Bachelor of Teaching and Diploma of Music, Andrew is passionate about seeing every student progress and be the best that they can be.

Contact us today to find out more!  
 020 400 78454  
[info@uptonelectricguitarschool.co.nz](mailto:info@uptonelectricguitarschool.co.nz)  
[www.uptonelectricguitarschool.co.nz](http://www.uptonelectricguitarschool.co.nz)



**Nf. Nourishing Fathers.**

JOIN OUR COMMUNITY.  
[www.nourishingfathers.com](http://www.nourishingfathers.com)  
[duane@nourishingfathers.com](mailto:duane@nourishingfathers.com)

Raising the bar of fathering, for you, your family, and our world.

**WHAT FATHERS GET**

Swap stories, experiences, and ideas around our shared mission of raising the bar of fathering.

**UPTON Drum School**  
 FIND YOUR RHYTHM

**2021 DRUMTRUCK LESSONS!**

LEARN MODERN SONGS, GROOVES AND RHYTHMS, ALL DURING SCHOOL TIME! EVERY STUDENT HAS THEIR OWN ROLAND KIT, AND WILL LEAVE THE LESSONS WITH A SMILE AND A NEW SKILL!!

**CONTACT**  
[INFO@UPTONDUMSSCHOOL.CO.NZ](mailto:INFO@UPTONDUMSSCHOOL.CO.NZ) TO SECURE YOUR SPOT!

**GOBSMACKED MUSICAL THEATRE SCHOOL**

**LUNCHTIME WORKSHOPS**

\$135 per term (\$15 per lesson)

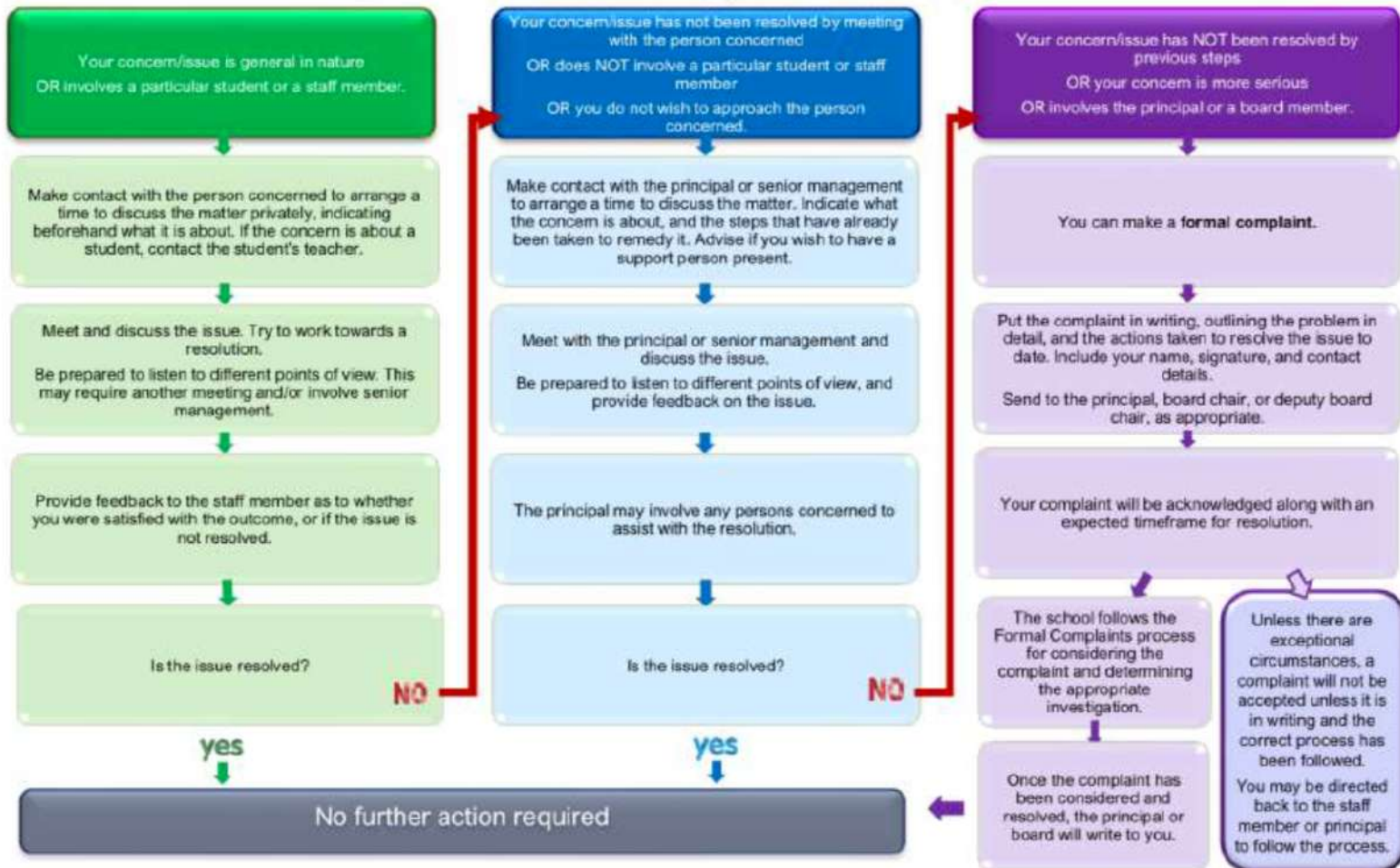
**TERM 2 SCHOOLS:**  
 PILLANS POINT  
 ST MARYS  
 TGA PRIMARY  
 TAUMATA  
 BELLEVUE  
 OTUMOETAI

Sign up for a lunchtime lesson  
 To register go to: [WWW.GOBMSMACKED.NZ](http://WWW.GOBMSMACKED.NZ)



# Channels for Communication:

Most concerns can be resolved informally by discussions with the people concerned.



This flowchart aligns with the school's Concerns and Complaints policy and procedures.

## Taumata Expectations for Parents

At our school, we value

### Learner Agency - Grit - Collaboration - Creativity - Authentic Learners

Outside our Learning spaces we ...	Meet the children away from the door Wait out of sight Allow children to leave the learning spaces
Inside the Learning spaces we ...	Make an appointment to meet with the Learning Coaches Actively supervise preschoolers at all times Leave the spaces as you found them Check with Learning Coaches before preschoolers play with equipment Allow children to do things for themselves
Inside the admin block we ...	Wait patiently for someone to help you Be mindful of others working and wait quietly Be respectful at all times
Playground	During school hours check-in through the office before entering the school, except after 2:15 pm Keep bikes and scooters etc away from the playground and buildings Actively supervise your children
Carpark	Park in the correct area Follow all signs and directions Park away from the school whenever possible Encourage children to walk or ride to school
Communication - Learning coaches - Admin - Management - Other parents	Show respect at all times Contact the Learning Coach to see if they can answer your questions before Admin / Leadership Make an appointment to discuss concerns Talk directly to the person involved, not via Social Media Be aware of differing opinions Be solution focused and positive

## School Docs

Our school policies are managed through School Docs and are available for viewing at anytime. You can access our policies and procedures via **Hero** or visiting: [www.schooldocs.co.nz](http://www.schooldocs.co.nz) in the search bar type Taumata School. Enter our username (**taumata**) and password (**empowered**)

