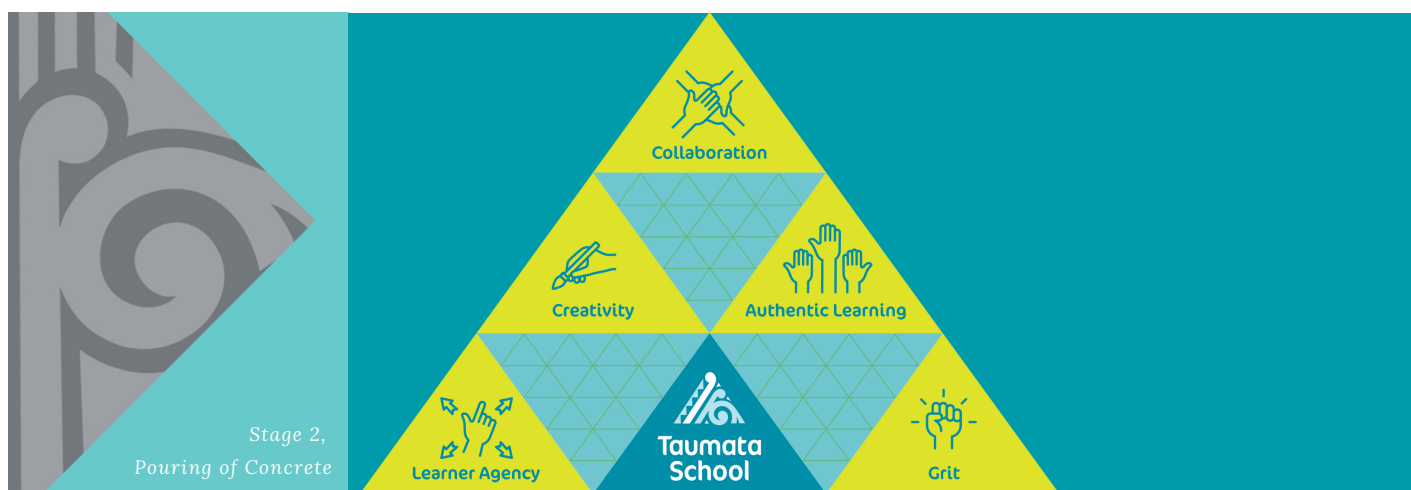


TAUMATA SCHOOL



Key Dates:

TERM 1: 03 Feb - 13 April

- **7 March: Art Gallery Trip, Emma class**
- **8 March: Art Gallery Trip, Georgia class**
- **8 March: Whanau Ropu Meeting 7-8pm**
- **9 March: Art Gallery Trip, Ruth class**
- **9 March: Yr 8 HPV onsite**
- **11 March: Art Gallery Trip, Sean class**
- **18 March: Yr 8 HPV catch ups**
- **31 March: John Parsons, Digital Citizenship**
- **06 April: Yr7&8 Falls Trip**
- **14 April: Last Day of Term 1**
- **15 April: Good Friday, School Closed**
- **02 May: First Day of Term 2**

Message from the Principal:

Principal Gen Fuller

Kia ora, Talofa, Malo e leleli, Kia orana, Fakalofa lahi Atu, Taloha Ni, Ni sa bula, 你好, Namaste, 안녕하세요, Hola, Sat Sri Akaal,

Over the last fortnight each team has been busy engaging in learning experiences that focus on our conceptual inquiry “Belonging”. At Taumata, our inquiry involves starting with a concept and delving deeper into that concept through a specific context. In Mauao, the team are focusing on “Ko wai au - Who am I?”; Ōhane have a focus on “Hauora - Wellbeing”; Matarawa have a focus on “Tohutohu - Symbiotic Relationships”; Pūwhenua on “Korero Mai - My stories” and Otanewainuku “Hauora - Well Being”. The intention of all teams is to take a holistic view of the concept and context with learning shared and celebrated at our Matariki celebration in June this year. Have a chat to your children about what they are learning and how it relates to an overall idea of belonging and well being.

Whilst our integrated curriculum is based on a conceptual inquiry, we assure you we still prioritise reading, writing and math - this is our “BAU (business as usual)” or core business. In the last week we have had learning matters expert mentor ‘Marion’ onsite working with our team to grow capability in a structured literacy approach. Structured literacy is explicit teaching that focuses on phonological awareness, word recognition, phonics and decoding, spelling, and syntax at the sentence and paragraph levels. These skills are the necessary foundations for having greater success in Reading.

This week we announced the 2022 student ambassadors from a group of high quality applicants. All applicants went through a rigorous process where they wrote a letter of application and engaged in a formal interview with leadership. The focus of the interview was around the qualities of leaders and the skills/competencies necessary to lead at Taumata. We would like to congratulate the following students on their appointment to the following positions:

Caden Gaylard - Ambassador for Sports
Jimmy Jensen - Ambassador for Sports
Matilda Valentine - Ambassador for Sports
Joel Troughton - Ambassador for Kaitiakitanga
Molly Boonzaaier - Ambassador for Kaitiakitanga
Makae Fuller - Ambassador for Te Ao Māori
William Takai - Ambassador for Te Ao Māori
Gracie Erskine-Shaw - Ambassador for Learning
Connor Cronje - Ambassador for Learning
Flora Saifi - Ambassador for Technology
Caleb Green - Ambassador for Technology
Alaina Lawrie - Ambassador for Arts & Culture
Jessica Coyne - Ambassador for Arts & Culture

Property Message from the Board:

The Taumata School Board are appreciative of your patience and flexibility, especially in regards to the many projects on the go. The following is a brief update on various projects:

We continue to await consent for the temporary buildings that will accommodate Otanewainuku students. Once consent is approved the buildings will then need to be piled and access ways/decks built to allow entry and exit. A big thank you to Otanewainuku learning coaches and students for being flexible as we await the completion of this project.

Stage 2 build is progressing as expected - working to a June completion date. As you will note the far end of the building has all steelwork in place and the wall linings currently going in. The end closer to the hall has had the slab poured and steel form work is starting.

In mid March we have a new senior playground project starting. This playground is based on the design and feedback our 2021 ambassadors collated and provided. The playground will be located between the existing junior playground, turf and Matarawa learning space. We are very excited about this project.

In April you will note some works to the front administration area. This is remediation work to address the front entrance on windy days. Currently there is a real hazard to all visitors, students and staff when the prevailing wind is apparent. The remediation works will involve a wind lobby area to give protection when entering the front administration area.

At the rear of the site we have a double hardcourt project underway. At this stage the foundations, leveling and asphalt are in place. In March Tiger turf will come to lay the turf and set the markings for netball, hockey and tennis. The area will be fenced and we look forward to hand over in mid April.



TAUMATA COVID CASE MANAGEMENT PROTOCOLS

Phase 3 Omicron Response

At Phase 3, Close Contacts no longer need to isolate. If you get a notification from your workplace, school or through the NZ COVID Tracer app that you are a Close Contact, you should monitor your symptoms for 10 days. If you develop symptoms get a test, and you should isolate until you get your result.

If you live with someone who has tested positive for COVID-19, you are considered a Household Contact and will need to isolate for 10 days. You must get a test on Day 3 and Day 10 of your isolation. If you develop symptoms you should get a test sooner. If you are a Household Contact and you test positive, you will need to isolate for 10 days.

From Friday 25 February, if you are currently a Close Contact and are part way through your isolation, you do not need to complete your 10 days isolation and you will be permitted to leave. You do not need to get a negative COVID-19 test.

Your child tests positive for Covid-19

Your whole household must isolate for 10 days. Count Day 0 as the day you first notice symptoms

Make a list of potential contacts and inform them that your child has tested positive. This includes our school.

Your child can return to school on day 11. Due to the possibility of COVID remaining in the system you are not required to have a test to return.

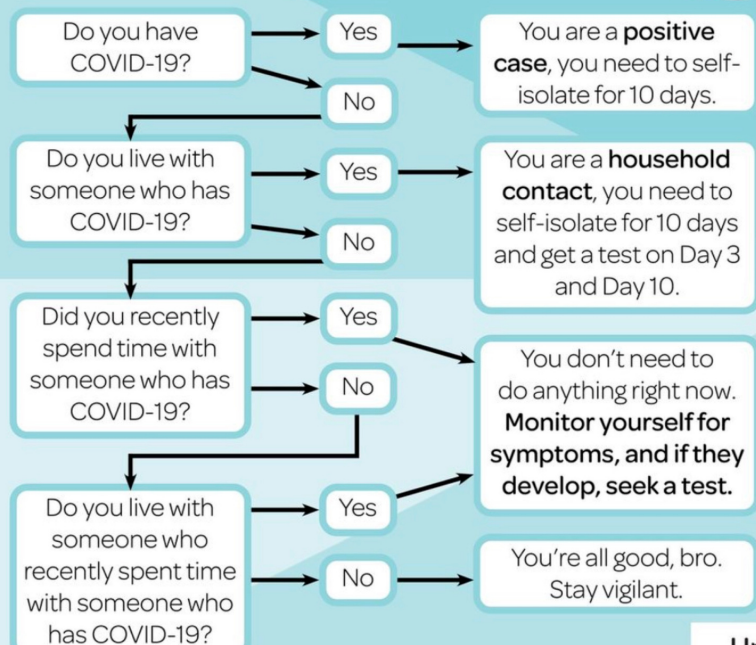
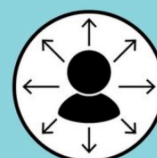
A household whānau member tests positive for Covid-19

Your whole household must isolated for 10 days. Count Day 0 as the day you first notice symptoms.

Make a list of contacts and inform them of your positive case. Please keep your child at home.

Your child can return to school on day 11. Due to the possibility of COVID remaining in the system you are not required to have a test to return.

What type of contact are you?



AGES 9 TO 18

**CODING
LESSONS****CODING**NZ**Coding NZ Lessons**

- Learn coding languages to create technology.
- An expert tutor is online to help during lessons.
- 1 hour per week at 4pm, 5pm or 6pm weekdays.
- Try a free trial lesson at codingnz.com

A BRIGHT FUTURE

Our lessons will expand your child's horizons. Your child will learn to not only passively consume technology, but to create technology so that they can be an active part of the digital era. Learning to code is great for student's brains as it develops regions of the brain associated with both math and language. Children have an amazing capacity for learning and introducing them to coding while they're young will help set them up for success in our increasingly digital world.

APPLY NOW (Free Trial Lessons Available)

To give your child the opportunity to learn how to program technology apply now at codingnz.com/signup

WHO

Students aged 9 to 18

WHAT

Beginner and advanced coding lessons where students learn to create technology

WHEN & WHERE

Online at home
One hour per week
4pm, 5pm, or 6pm weekdays

codingnz.com**STEAM-ED**

STEAM-ED (formerly House of Science Tauranga) Afterschool classes for Term 1 are:

Tuesday - Space Exploration 5-8yrs, 3:30pm-5pm

Wednesday - Space Exploration 9-13yrs, 3:30pm-5:30pm

Thursday - Robotics 8-13yrs, 3:30pm-5:30pm.

For online enrolments go to <https://enrolmy.com/steam-ed>

All enquiries **Ph 022 3773209** or e-mail info@steamed.nz

Website: www.steamed.nz

Classes start Tuesday 15th February 2022 for 8 weeks.

GIVE IT A GO PROGRAMME

6 WEEKS



YEAR 1-4





NORTHERN DISTRICTS CRICKET

CATCH! THROW! STRIKE!

LOCATION	DAY	START DATE	TIME
Te Puke Domain, Te Puke	Tuesday	22-Feb-22	4pm
Alice Johnson Oval, Papamoa	Thursday	24-Feb-22	4pm
Blake Park, Mt Maunganui	Thursday	24-Feb-22	4pm
Katikati College, Katikati	Friday	25-Feb-22	3.30pm
Pemberton Park, Greerton	Friday	25-Feb-22	5pm
The Tga Domain, Central Tauranga	Friday	25-Feb-22	4pm
Fergusson Park, Matua	Saturday	26-Feb-22	9am

REGISTER VIA [NDCRICKET.CO.NZ/PLAY](https://ndcricket.co.nz/play) - TURN OVER FOR MORE INFORMATION



The One and a Half Acre Wood

After School & Homeschool Classes (Ponies, Nature, Pets)
Birthday Parties (Unicorn, Cowboy, Fairies, Farmyard)
Preschool, School and Group Bookings

allaboutanimals@gmail.com

FB & Instagram:
@theoneandahalfacrewood

Dianne Amott

80 Odey Road, Whakamarama
(20 mins from Bethlehem)!!!

07 5525604 021723139



Grom Squad
After School Surf Program

5 & 10 Week Program - Ages 7 - 15 yrs
Ideal for beginners and up

1.5 hr lessons
Monday, Thursday, Saturdays
Terms 1, 2 & 4

Mondays & Thursday - 4 - 5.30pm
Saturdays - 9am - 10.30am, 11am - 12.30pm

- Qualified and experienced instructors
 - 4 to 6 students per instructor
 - Nationally accredited
 - Award winning surf school

HIBISCUS For information and bookings visit
MOUNT MAUNGANUI SURF SCHOOL www.surfschool.co.nz
Or call 027 279 9687



HAVE A GO DAY...
Sunday 20th February
3.00 pm
Waimarino Water Park
(36 Taniwha Place, Bethlehem)
Register with:
Dan - 027 210 0900

CANOE SLALOM

- Do you want to learn an "extreme" (but safe and super fun!) sport?
- Do you love the outdoors?
- Do you love being part of a team? Maybe represent New Zealand one day?
- Does socialising with other kayakers from local schools in our area sound like fun?
- Do you want to learn with excellent instructors at a friendly, well-established club that caters for all levels of paddlers?

For more information, contact: Dan Munro
Canoe Slalom Bay of Plenty Coach
(Mobile) 027 210 0900
(E-mail) coachdan@canoeslalombo.co.nz
www.canoeslalombo.co.nz

CS BOP
CANOE SLALOM BAY OF PLENTY
'PADDLE FOR FUN, RACE TO WIN'

All gear provided. No cost.

**UPTON
Drum
School**
FIND YOUR RHYTHM



INTRODUCING 2022 DRUM LESSONS

Join us today to 'Find your Rhythm!'

Check out our awesome and convenient mobile classroom! We teach a variety of popular songs, grooves and so much more.. Your child will learn in a fun group environment during school hours.

FOR MORE INFORMATION CHECK OUT:

 WWW.UPTONDRUMSCHOOL.CO.NZ
 [UPTONDRUMSCHOOLNZ](https://www.instagram.com/uptondrumschoolnz)

CONTACT US AT:

INFO@UPTONDRUMSCHOOL.CO.NZ



 **THE
GYMNASTIC
ACADEMY**
0211705426

AIR TRACK TUMBLE CLASS TAUMATA SCHOOL

Beginner & advanced level for Matarawa & Ohane hubs Term 1

Inspiring students to achieve goals!



**Term
1**

**Friday 7:15-8:15am. Matarawa Hub
Monday 7:15-8:15am Ohane Hub
11th Feb - 8th April 2022**

With grade certificate! \$125

Book online at

www.thegymnasticacademy.com

Call Marie 0211705426
for more information

**UPTON
Electric
Guitar
School**
FIND YOUR SOLO



GUITAR TUTION

Upton Electric Guitar School is your go to for all of your Guitar and Bass tuition needs! We offer both private and group lessons. We also tutor in schools throughout Tauranga.



Contact us today to find out more!
020 400 78454
info@uptonelectricguitarschool.co.nz
www.uptonelectricguitarschool.co.nz



What we do

All lessons are held in our mobile truck which is fitted with state of the art recording equipment, effects and guitars. With a Bachelor of Teaching and Diploma of Music, Andrew is passionate about seeing every student progress and be the best that they can be.



A BAND PROGRAMME FOR EVERYONE!

The Jam Bus will be bringing an exciting group music programme like no other! Open to ages 5-12, and facilitated by experienced familiar tutors. There has never been a better time to start your music journey!

GET CONNECTED TO FIND OUT MORE!

Keep in touch and stay up to date with all the exciting developments that will be announced soon.. Register your interest today!

**REGISTER YOUR INTEREST AT
WWW.THEJAMBUS.CO.NZ**



Are you thinking about moving?

List your home for sale with me, nominate Taumata School and when your home sells – I'll donate Taumata School \$500

Contact me today to find out more.

Brent Bastin
Award Winning Sales Consultant
M 022 289 2647
brent.bastin@tremains.co.nz



Terms & Conditions apply
Tremains Real Estate BOP Limited Licensed Real Estate Agent REAA2008



Whānau Rōpū, our friendly and open group for the school community who help make improvements that will benefit Taumata School's children and organise community events that enable an inclusive and positive school culture.

They had their first meeting in 2022 on Tuesday. Their first event would have been our school picnic, that unfortunately we are not able to hold.

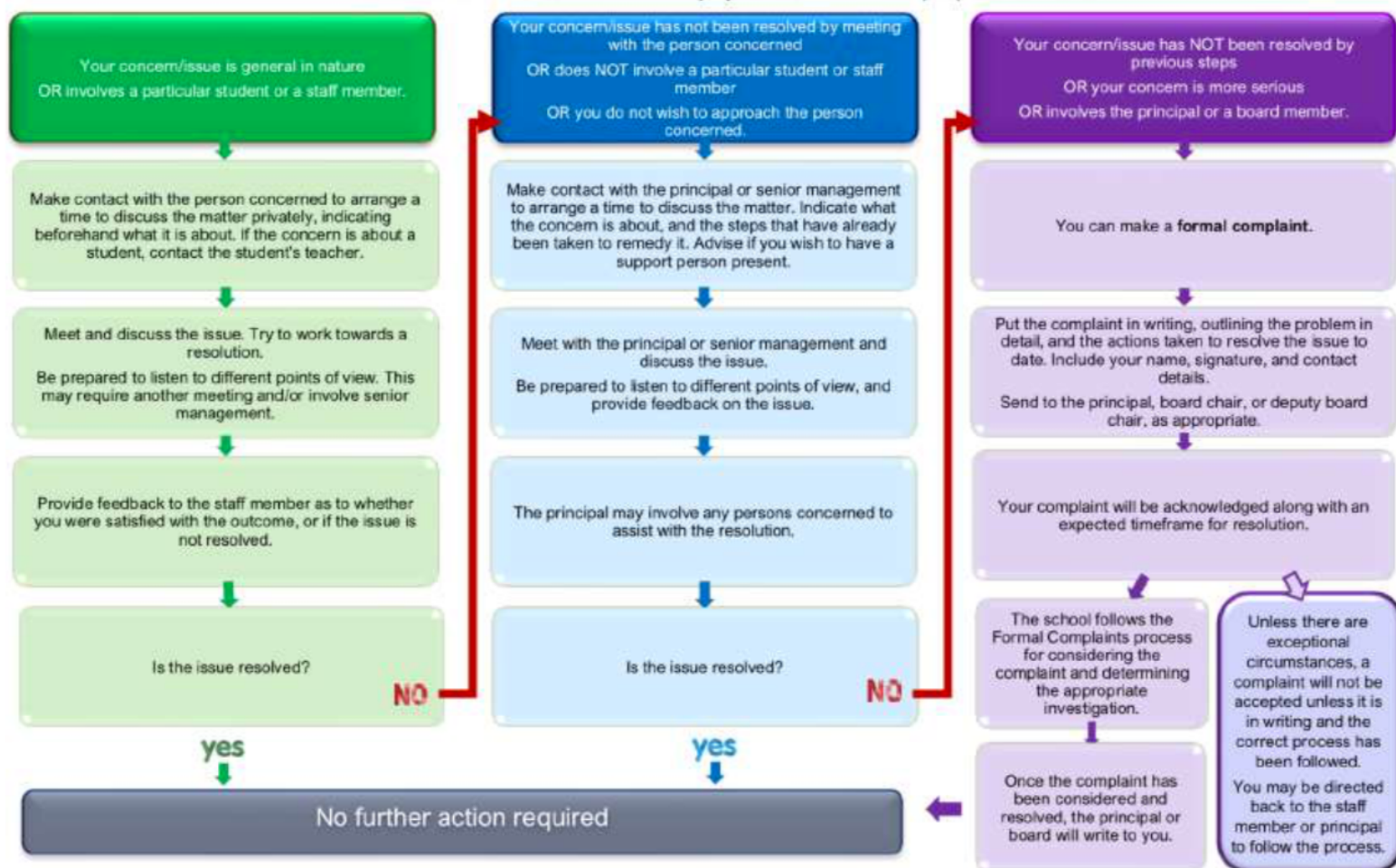
The Whānau Rōpū are now busy developing other options to support our Taumata School in our current climate.

Alternatively - stay up to date on our Facebook page @taumataschoolwhanaupu"



Channels for Communication:

Most concerns can be resolved informally by discussions with the people concerned.



This flowchart aligns with the school's Concerns and Complaints policy and procedures.

Taumata Expectations for Parents

At our school, we value

Learner Agency - Grit - Collaboration - Creativity - Authentic Learners

Outside our Learning spaces we ...	Meet the children away from the door Wait out of sight Allow children to leave the learning spaces
Inside the Learning spaces we ...	Make an appointment to meet with the Learning Coaches Actively supervise preschoolers at all times Leave the spaces as you found them Check with Learning Coaches before preschoolers play with equipment Allow children to do things for themselves
Inside the admin block we ...	Wait patiently for someone to help you Be mindful of others working and wait quietly Be respectful at all times
Playground	During school hours check-in through the office before entering the school, except after 2:15 pm Keep bikes and scooters etc away from the playground and buildings Actively supervise your children
Carpark	Park in the correct area Follow all signs and directions Park away from the school whenever possible Encourage children to walk or ride to school
Communication - Learning coaches - Admin - Management - Other parents	Show respect at all times Contact the Learning Coach to see if they can answer your questions before Admin / Leadership Make an appointment to discuss concerns Talk directly to the person involved, not via Social Media Be aware of differing opinions Be solution focused and positive

School Docs

Our school policies are managed through School Docs and are available for viewing at anytime. You can access our policies and procedures via **Hero** or visiting: **www.schooldocs.co.nz** in the search bar type Taumata School. Enter our username (**taumata**) and password (**empowered**)

