

TAUMATA SCHOOL



Stage 2,
Pouring of Concrete



Key Dates:

TERM 1: 03 Feb - 13 April

- 15 Feb: Yr 8 HPV Talk
- 17 Feb: School picnic - cancelled
- 28 Feb: Yr5&6 Competitive Swimming
- 8 March: Whanau Ropu Meeting 7-8pm
- 9 March: Yr 8 HPV onsite
- 18 March: Yr 8 HPV catch ups
- 18 March: Yr7&8 Competitive Swimming, Tall Poppies
- 31 March: John Parsons, Digital Citizenship
- 06 April: Yr7&8 Falls Trip
- 14 April: Last Day of Term 1
- 15 April: Good Friday, School Closed
- 02 May: First Day of Term 2

Message from the Principal:

Principal Gen Fuller

Kia ora, Talofa, Malo e leleli, Kia orana, Fakalofa lahi Atu, Taloha Ni, Ni sa bula, 你好, Namaste, 안녕하세요, Hola, Sat Sri Akaal,

Welcome back to everyone returning to Taumata School and a special welcome to all of our new tauira (students) and whanau (families). This year we welcome a further 60 students and their families to our school community - we know that you will love our kura, our community and embrace the many amazing opportunities on offer.

Whilst we are well aware of the current challenges and adjustments relative to COVID (and more specifically Omicron) in recent correspondence I highlighted a need to modify the conversation. In this newsletter I hope to draw returning families back to our vision (WHY) and principles (HOW), and for new families joining our school whanau highlight what we hope are the pou of our approach to learning. For more in depth information please visit our school website: www.taumata.school.nz

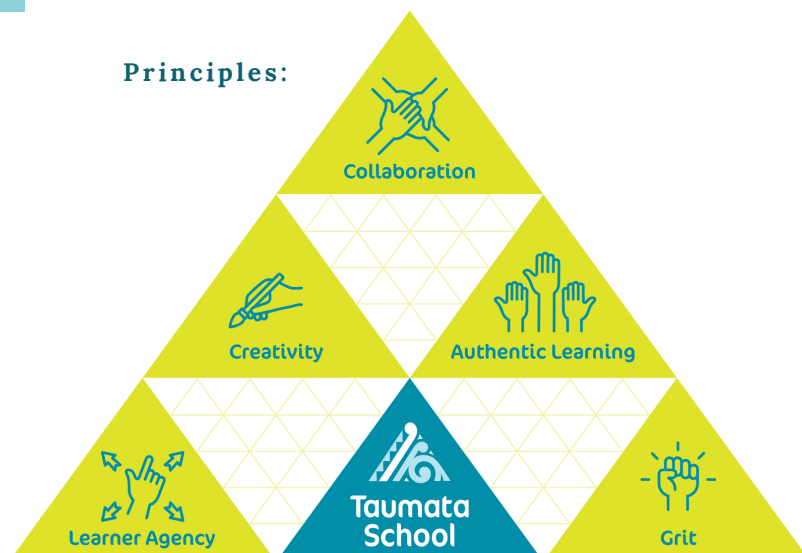
Mission:

To provide a world-class learning experience that prepares and empowers students for the adventure that is life.

Vision:

Empowered to Learn; Empowered for Life
Whakamana te ako; kia mana te ora!

Principles:



New Team Members:

A very warm welcome to our newest members of the team. We welcome Heather Williams (Matarawa Learning Coach); Christina Garner (Mauao Learning Coach) and Jane Holmes (Mauao Learning Coach). In addition we welcome Paige Kenchington to our team as a learning assistant.

Farewell:

Many of you will know that we have an exceptional Sports Coordinator and sadly Marcus will be leaving us this term. The Board and Taumata team wish to thank Marcus for all that he has done to support the growth and involvement of students in Sport. Nāu te rourou, nāku te rourou, ka ora ai te iwi (with your food basket and our food basket the people will thrive - essentially with our shared skills and knowledge our school will thrive).

Carpark and Drop Zone:

Parking and school drop off/pick up is a challenge for every school. The consent process allows for enough carparks to accommodate staff parking off the street. The school design process does not take into account a need to provide parking for parents - due to the fact that a need for parent parking is often for 'short-periods' of time.

The fact that we have 560 plus students exiting the gate at a similar time can cause traffic congestion and confusion. We have tried to implement appropriate measures but we strongly ask for your patience, co-operation and the need to make a plan with your child/ren.

The Drop off zone and pick up zone are designed to be a 'moving space' and we ask that only Mauao parents and Ohane parents utilise this area. No parents should park in the drop off zone and exit their vehicle. If you move through the drop off/pick up zone and your child is not there for collection please exit and do a loop again. An earlier conversation with your child about waiting on the grass area will assist with this.

There is an expectation that Matarawa, Puwhenua and Otanewainuku students arrange a pick up area away from the school site. If you have younger students and older students please organise for the older siblings to collect younger siblings and meet at your predesignated collection point.

Taumata School – New 40km/h Variable Speed Limit



Tauranga City Council has installed School Zone variable speed limit electronic signs at Taumata School.

Variable speed limits on roads near schools are intended to meet the following objectives:

1. provide a safer environment outside schools during times of peak school activity
2. reinforce driver expectation of the likely presence of children
3. encourage active modes of travel (walking and cycling) to school



At peak before and after school times the signs will activate with a 40 lit up (pictured). This will mean a 40km/h speed limit is in place. The signs will not operate during school holidays, weekends or teacher only days. The 40km/h variable speed limit activation times are currently set for:

Monday – Friday, 7.55am – 8.30am and 2.25pm – 2.45pm.

The 40km/h variable school speed zone is on parts of Kennedy Rd, Mortlake Heights, and Te Ranga Memorial Drive (indicated blue in the map below). There will be two electronic signs on faster, busier Kennedy Rd, and metal static signs installed on Mortlake Heights and Te Ranga Memorial Drive.



Mobility Carpark:

We have a number of students and/or families with accessibility needs and therefore convenient mobility access is a must. Please do not park in these areas if you are 'able bodied'. We also ask that you only utilise these areas if you hold a mobility card, display it in the window and intend to exit the vehicle to collect your child.

School Donations:

A school donation is a voluntary payment that allows a school to enhance learning programmes and resources in pursuit of the vision. Every year the Board reviews the school donation and sets it for the following year.

At Taumata School we are aware of the ongoing financial pressures that families face and therefore the school donation remains unchanged from 2019. The donation is set at \$80.00 for the first child. In 2021 this money was used to pay for a large number of additional curriculum resources, subsidise landscaping and playscape, sports uniforms, and personnel resources. No child was excluded from using these resources but it does seem that quite a number of families relied on the goodwill of others to support their child.

We understand that a donation is voluntary and that it can be at times very difficult to manage. Vanessa is very happy to discuss possible arrangements for meeting this cost for your child. Each small contribution adds up across the course of time and helps to enhance our school.

A huge thank you to all those families who paid their donation last year.

Empowerment Charitable Trust:

In 2021 the Empowerment Charitable Trust was established by members of the Board to assist students of Taumata School who are in need of assistance to enable them to participate fully in the school's educational activities and to assist other members of the community to advance the school's mission statement. This trust is a registered charitable trust and is available on the Charitable Trust NZ register. Examples of functions of the trust include supporting students with essential items to access the curriculum, to support access to co-curricular activities that support the school experience.

The trust is administered by the board which is made up of Gen Fuller, Mike Rankin and Gareth Thomas and relies on donations from philanthropic groups or individuals. Examples include donations in 2021 from Brent Bastin - Tremains Real Estate.

In due course we will outline how one might access these funds to support individual student needs; and if you are interested in making a donation to this charitable trust please contact Gen through the main office.



team up with tremains

Are you thinking about moving?

List your home for sale with me, nominate Taumata School and when your home sells - I'll donate Taumata School \$500

Contact me today to find out more.

Brent Bastin
Award Winning Sales Consultant
M 022 289 2647
brent.bastin@tremains.co.nz

TREMAINS
Real Estate

Terms & Conditions apply
Tremains Real Estate RCP Limited, Licensed Real Estate Agent REAA 2008

Message from the Board of Trustees:

Chairman of the Board, Tom Roberts

Hi Everyone,

A big welcome back from me and the Board of Trustees. Also an extra special welcome to all our new students, Whanau and staff who have joined us this year.

A bit of an update as I know the opportunities to be on site are less so you might not have seen the developments going on. The stage 2 new build by the avocado grove is starting to take shape with an expected completion date of June this year. The temporary buildings requested to ease the squeeze while waiting for stage 2 are on site as you will have seen but awaiting council consent for them to be piled and prepared for use. To alleviate this delay Yr7/8 are using the technology spaces for learning and enjoying the use of the facilities! In March you will see an extension on the front entrance being constructed. This is to reduce the risk of the door slamming on people when it gets caught on our windy days. The double courts are nearly ready for use in the next few weeks, they will eventually be turfed probably after Easter. There is a senior playground booked for installation in the few months in front of Matarawa that will greatly increase the capacity for active play at the school. As you can see there is plenty happening and we really appreciate your support in these times of growth when we just have to remain positive and flexible.

My own children were thrilled to get back to school, see their friends, meet their Whanau teacher and get their teeth into some good learning. Thanks from me for supporting the school and staff through the ever changing landscape of regulations. The core business of Taumata school is to educate your children. We do this by creating a safe and positive place for them to learn and discover. Throughout all these changes and obstacles like distancing, please remember that the priority for all school staff is the safety of your child and their education. Thanks so much for sending them to school here. They make Taumata school amazing.

Please say hello if you see myself or any of the Board out and about.
Have a lovely weekend.

2022 TERM DATES:

Term 1: Thursday 03 February - Thursday 14 April

Monday, 31 January: Auckland Anniversary Day (public holiday)
Tuesday, 01 February: Teachers Only Day (school closed)
Wednesday, 02 February: Teachers Only Day (school closed)
Thursday, 03 February: First Day of Term 1:
Monday, 07 February: Waitangi Day Observed (public holiday)
Thursday, 14 April: Last Day of Term
Friday, 15 April: Good Friday
Saturday, 16 April to Sunday, 01 May: School Holidays: Saturday

Term 2: Monday 02 May - Friday 08 July

Monday, 02 May: First Day of Term 2
Monday, 06 June: Queens Birthday (public holiday)
Friday, 24 June: Matariki Celebration (public holiday)
Monday, 27 June: Teacher Only Day (school closed)
Friday, 8 July: Last Day of Term
Saturday, 09 July to Sunday, 24 July: School Holidays

Term 3: Monday 25 July - Friday 30 September

Monday, 25 July: First Day of Term 3
Friday, 30 September: Last Day of Term
Saturday, 01 October - Sunday, 16 October: School Holidays

Term 4: Monday 17 October - Tuesday 13 December

Monday, 17 October: First Day of Term 4
Monday, 24 October: Labour Day (public holiday)
Tuesday, 13 December, 12.40pm: Last Day of Term
Wednesday, 14 December - February 2023 (date tbc): School Holidays

Meet the Learning Coach & School Picnic



Next Thursday 17th February we were scheduled to host an informal 'Meet the Learning Coach' before our school picnic, but unfortunately due to the current red settings, we are no longer able to host either of these events on-site.

We value the importance of building strong partnerships and whilst we are unable to do that in person at present, you will receive an online form from your child's whanau learning coach soon. This form will ask a number of questions about your child as a learner as we endeavour to get to know as much as possible about your child to begin the year. It is an opportunity for you to share any important information with us.



Whānau Rōpū, our friendly and open group for the school community who help make improvements that will benefit Taumata School's children and organise community events that enable an inclusive and positive school culture.

They had their first meeting in 2022 on Tuesday. Their first event would have been our school picnic, that unfortunately we are not able to hold.

The Whānau Rōpū are now busy developing other options to support our Taumata School in our current climate.

Alternatively - stay up to date on our Facebook page @taumataschoolwhanaupu"



Sports Registrations are OPEN

Please go onto our school website to pay, register and fill out the forms.

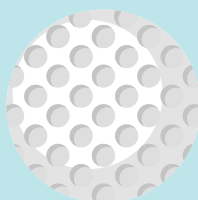
Term 1 Sports:

Rippa, Waterpolo / Mini Polo, Fast Footy

There is age restrictions for some of these sports.

Rippa - learn to coach for interested parents. Please go to register:

<https://www.sporty.co.nz/viewform/193608>





Grom Squad
After School Surf Program

5 & 10 Week Program - Ages 7 - 15 yrs
Ideal for beginners and up

1.5 hr lessons
Monday, Thursday, Saturdays
Terms 1, 2 & 4

Mondays & Thursday - 4 - 5.30pm
Saturdays - 9am - 10.30am, 11am - 12.30pm

- Qualified and experienced instructors
 - 4 to 6 students per instructor
 - Nationally accredited
 - Award winning surf school

HIBISCUS For information and bookings visit
MOUNT MAUNGANUI SURF SCHOOL www.surfschool.co.nz
Or call 027 279 9687



HAVE A GO DAY...
Sunday 20th February
3.00 pm
Waimarino Water Park
(36 Taniwha Place, Bethlehem)
Register with:
Dan - 027 210 0900

CANOE SLALOM

- Do you want to learn an "extreme" (but safe and super fun!) sport?
- Do you love the outdoors?
- Do you love being part of a team? Maybe represent New Zealand one day?
- Does socialising with other kayakers from local schools in our area sound like fun?
- Do you want to learn with excellent instructors at a friendly, well-established club that caters for all levels of paddlers?

For more information, contact: Dan Munro
Canoe Slalom Bay of Plenty Coach
(Mobile) 027 210 0900
(E-mail) coachdan@canoeslalombo.co.nz
www.canoeslalombo.co.nz

All gear provided. No cost.

CS BOP
CANOE SLALOM BAY OF PLENTY
'PADDLE FOR FUN, RACE TO WIN'

**UPTON
Drum
School**
FIND YOUR RHYTHM



INTRODUCING 2022 DRUM LESSONS

Join us today to 'Find your Rhythm!'

Check out our awesome and convenient mobile classroom! We teach a variety of popular songs, grooves and so much more.. Your child will learn in a fun group environment during school hours.

FOR MORE INFORMATION CHECK OUT:

 WWW.UPTONDRUMSCHOOL.CO.NZ
 [UPTONDRUMSCHOOLNZ](https://www.instagram.com/uptondrumschoolnz)

CONTACT US AT:

INFO@UPTONDRUMSCHOOL.CO.NZ



AIR TRACK TUMBLE CLASS TAUMATA SCHOOL

Beginner & advanced level for Matarawa & Ohane hubs Term 1

Inspiring students to achieve goals!



Term

1

Friday 7:15-8:15am. Matarawa Hub
Monday 7:15-8:15am Ohane Hub
11th Feb - 8th April 2022

With grade certificate! \$125

Book online at

www.thegymnasticacademy.com

Call Marie **0211705426**
for more information



A BAND PROGRAMME FOR EVERYONE!

The Jam Bus will be bringing an exciting group music programme like no other! Open to ages 5-12, and facilitated by experienced familiar tutors. There has never been a better time to start your music journey!

GET CONNECTED TO FIND OUT MORE!

Keep in touch and stay up to date with all the exciting developments that will be announced soon.. Register your interest today!

REGISTER YOUR INTEREST AT
WWW.THEJAMBUS.CO.NZ

UPTON
Electric
Guitar
school
FIND YOUR SOLO



GUITAR TUTION

Upton Electric Guitar School is your go to for all of your Guitar and Bass tution needs! We offer both private and group lessons. We also tutor in schools throughout Tauranga.



Contact us today to find out more!
020 400 78454
info@uptonelectricguitarschool.co.nz
www.uptonelectricguitarschool.co.nz



What we do

All lessons are held in our mobile truck which is fitted with state of the art recording equipment, effects and guitars. With a Bachelor of Teaching and Diploma of Music, Andrew is passionate about seeing every student progress and be the best that they can be.



Are you thinking about moving?

List your home for sale with me, nominate Taumata School and when your home sells - I'll donate Taumata School \$500

Contact me today
to find out more.

Brent Bastin
Award Winning Sales Consultant
M 022 289 2647

brent.bastin@tremains.co.nz

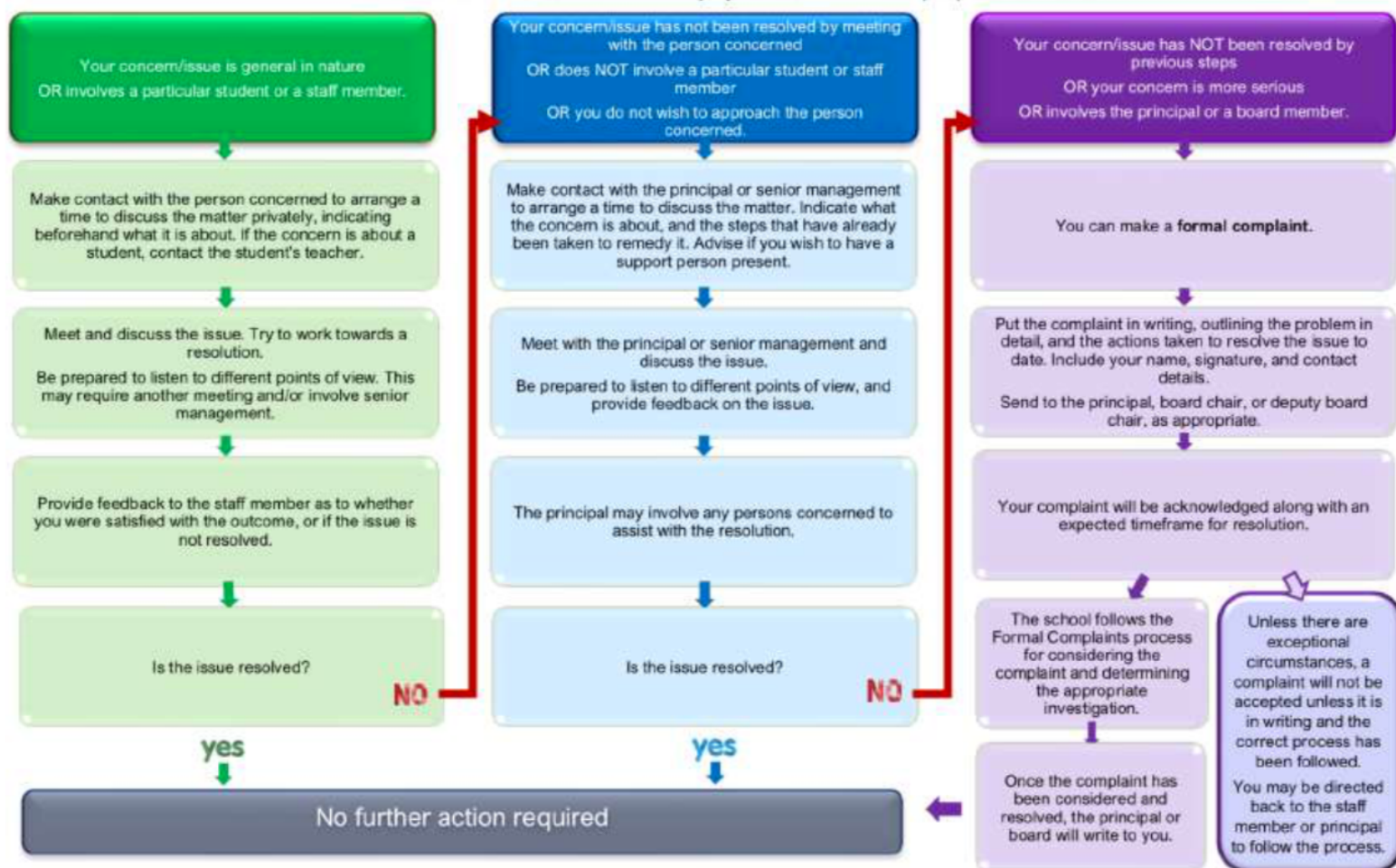
Terms & Conditions apply
Tremains Real Estate (RCP) Limited. Licensed Real Estate Agent REAA 2008.



TREMAINS
Real Estate

Channels for Communication:

Most concerns can be resolved informally by discussions with the people concerned.



This flowchart aligns with the school's Concerns and Complaints policy and procedures.

Taumata Expectations for Parents

At our school, we value

Learner Agency - Grit - Collaboration - Creativity - Authentic Learners

Outside our Learning spaces we ...	Meet the children away from the door Wait out of sight Allow children to leave the learning spaces
Inside the Learning spaces we ...	Make an appointment to meet with the Learning Coaches Actively supervise preschoolers at all times Leave the spaces as you found them Check with Learning Coaches before preschoolers play with equipment Allow children to do things for themselves
Inside the admin block we ...	Wait patiently for someone to help you Be mindful of others working and wait quietly Be respectful at all times
Playground	During school hours check-in through the office before entering the school, except after 2:15 pm Keep bikes and scooters etc away from the playground and buildings Actively supervise your children
Carpark	Park in the correct area Follow all signs and directions Park away from the school whenever possible Encourage children to walk or ride to school
Communication - Learning coaches - Admin - Management - Other parents	Show respect at all times Contact the Learning Coach to see if they can answer your questions before Admin / Leadership Make an appointment to discuss concerns Talk directly to the person involved, not via Social Media Be aware of differing opinions Be solution focused and positive

School Docs

Our school policies are managed through School Docs and are available for viewing at anytime. You can access our policies and procedures via **Hero** or visiting: **www.schooldocs.co.nz** in the search bar type Taumata School. Enter our username (**taumata**) and password (**empowered**)

