

# TAUMATA SCHOOL



## Key Dates:

- **27 November:** Orange Day
- **30 - 3 December:** ERO Assurance Review
- **4 December:** 8-8.30am Hero Help & Information Session, Staffroom
- **3 - 4 December:** Yr5&6 Bikes in school
- **8 December:** Mauao Athletics Day  
(postponement day 9 Dec)
- **10 December:** Matarawa Athletics Day
- **15 December:** Last day of term, 12.40pm end of day finish

## Message from the Principal:

*Principal Gen Fuller*

Nga mihi whanau.

Last evening we hosted our learning celebration hui and were amazed and heartened at the level of whanau engagement. The intention of these hui is two-fold; firstly it strengthens the partnership with you as 'first educators' for your children and provides an opportunity to connect and share progress; but alongside that is the opportunity to celebrate the learning growth that can be so much more than progress in Reading, Writing and Mathematics.

The five principles that enable us to achieve our vision are: Collaboration; Creativity; Authentic Learning; Learner Agency and Grit. These are our valued outcomes; the values and beliefs that influence every aspect of how we function. And... whilst not meaning to diminish the basic human need to be literate and numerate; these principles are the crowning accomplishment for graduates of Taumata School that will ensure they are ready to face a world of exponential change, digital disruption, ever-changing social norms and uncertainty.

Whilst some may view this description of the future as daunting we acknowledge and embrace change and want our Taumata children to not only survive but thrive.

Therefore, equipped with a repertoire of skills and competencies and be **empowered** for a fulfilling, adventurous life. We thank you for joining us to celebrate progress; whatever that personalised progress might look like for your precious little people.

# Planning for 2021:

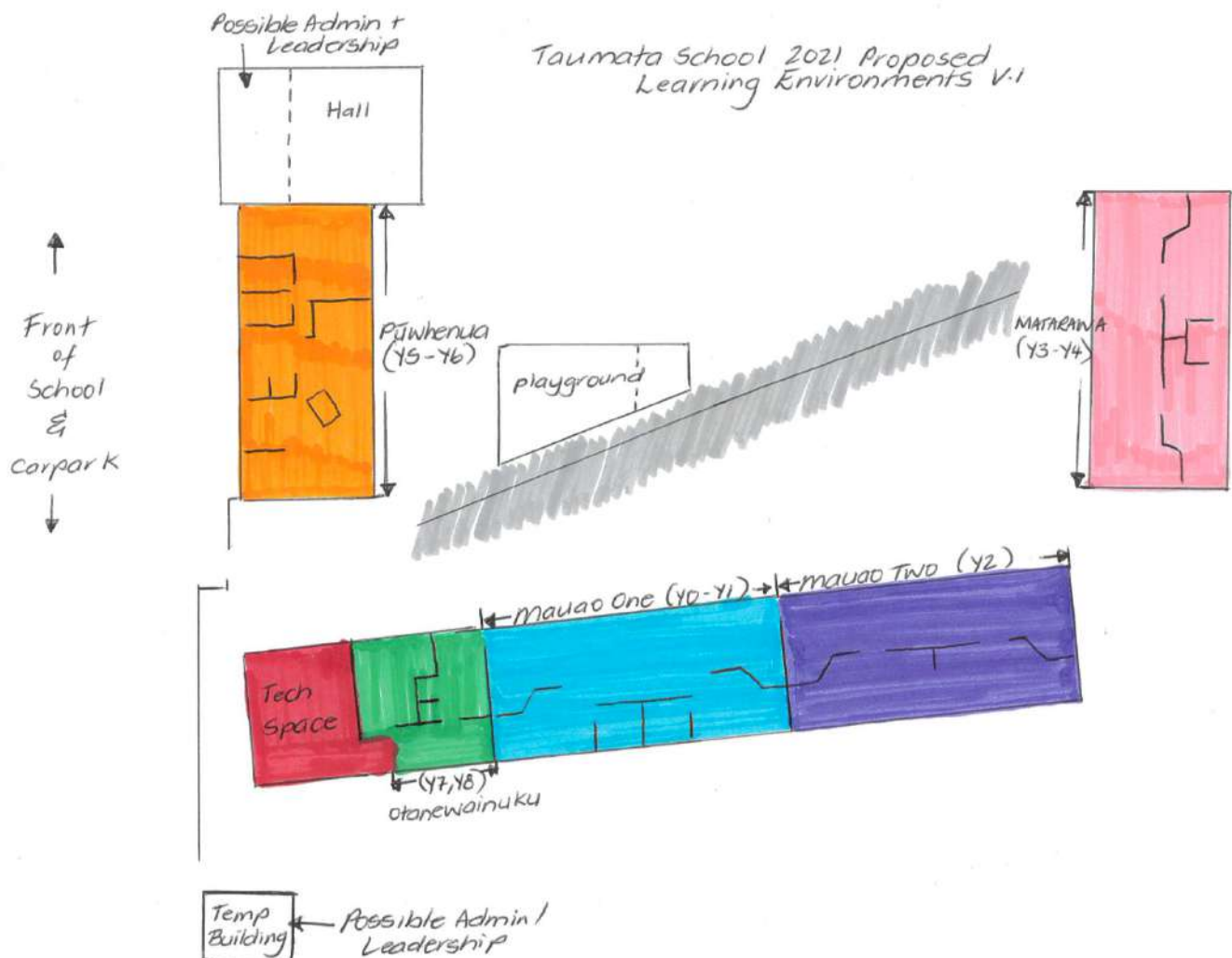
As communicated in previous correspondence we are excited about the imminent Stage 2 which includes a 13 classroom equivalent space that will allow growth to 650 students. Whilst we have been in constant communication with the MOE and project delivery team, various factors have led to a delayed start. As a result the BOT and leadership have worked with our teaching team to put an 'interim' plan in place to accommodate our growing numbers in 2021.

The current build (Stage 1) is designed to accommodate 390 students in three 596sm<sup>2</sup> learning studios (Mauao; Matarawa; Pūwhenua). We know we will start 2021 with more than 430 students and as a result the Ministry of Education has indicated a 'temporary building' will be brought onsite to ease pressure, however it is likely to be a more traditional single teacher learning space and located on the far side of the technology block.

Therefore, in order to remain true to our beliefs and commitment to collaboration and co-teaching we are redefining how the spaces will be used in 2021. The administration and leadership team will vacate the admin block and this will accommodate our growing Year 5 and 6 learners. The space is a wonderful space with a variety of zones to support various pedagogies. This will then mean Mauao 1 can be a designated Year 1 area; the current Matarawa studio will accommodate Mauao 2 (Year 2) and the current Pūwhenua learning studio will become Matarawa (year 3 and 4).

Our Year 7 and 8 students will then be relocated to the learning support and soft materials space allowing ease of integration with project based learning and the technology programme.

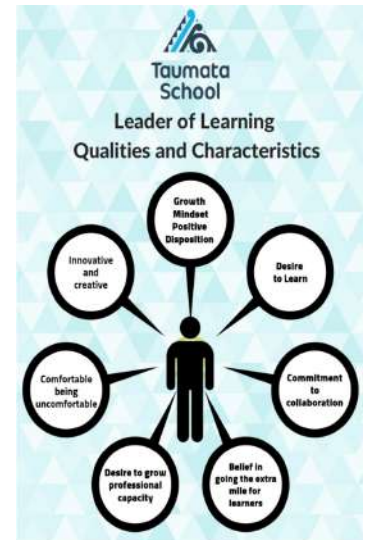
Whilst we recognise that these changes are not ideal (particularly at the end of our second year operation) the many changes are designed to give your children...; our students... the best environments in which to thrive and learn. We ask for your patience as we reconfigure our set-up for 2021 and any offers of assistance with moving furniture and resources in the last days of school would be welcome.



# Learning Teams for 2021:

The organisation of our teaching team for each year is a lengthy and robust process where many factors are taken into consideration; particularly in a rapid growth trajectory. The image to the right is an infographic that supports our recruitment of educators and something that all of our learning coaches aspire to and connect with. Therefore when planning teams and staff placement we are fortunate that our learning coaches are agile, adaptable and have a variety of skill-sets that will support our school moving forward.

Whilst we will need to continue to be responsive to the ongoing enrolment numbers the following describes the team make-up for 2021. Children will find out their whanau teachers at the end of Week 9 which will assist them in preparing for a return to school in 2021.



**Taumata School**

## Mauao 1 team

- Sandi Valentine
- Pippa Woods
- Megan Harris
- Arienna Porteners
- Molly Pender

**Taumata School**

## Mauao 2 team

- Michaela Jesney
- Hannah Rowland
- Helen Tangata
- Veronica Sowerby
- Kelsey Duff

**Taumata School**

**Taumata School**

## Pūwhenua team

- Georgla Ryan
- Ruth Burns
- Dayna Grimes
- Sean Clarke

**Taumata School**

## Matarawa team

- Sharon Baggaley
- Emma Packham
- Brent Tonkin
- Kylie Forlong
- Trudi Fausett

**Taumata School**

## Otanewainuku team

- Dan Priest
- Sjaan McDivitt

**Taumata School**

**Taumata School**

## Hika-a-te-awe team

- Raina Urwin
- Sean Fullick



# THE WHOLEHEARTED PARENTING MANIFESTO

Above all else, I want you to know that you are **LOVED AND LOVABLE**. You will learn this from my words and actions—the lessons on love are in how I treat you and how I treat myself.

I want you to engage with the world from a place of worthiness. You will learn that **YOU ARE WORTHY OF LOVE, BELONGING, AND JOY** every time you see me practice self-compassion and embrace my own imperfections.

We will practice **COURAGE** in our family by showing up, letting ourselves be seen, and honoring vulnerability. We will share our stories of struggle and strength. There will always be room in our home for both.

We will teach you compassion by practicing **COMPASSION** with ourselves first; then with each other. We will set and respect **BOUNDARIES**; we will honor hard work, hope, and perseverance. **REST AND PLAY** will be family values, as well as family practices.

You will learn **ACCOUNTABILITY AND RESPECT** by watching me make mistakes and make amends, and by watching how I ask for what I need and talk about how I feel.

I want you to know **JOY**, so together we will practice **GRATITUDE**.

I want you to feel joy, so together **WE WILL LEARN HOW TO BE VULNERABLE**.


When uncertainty and scarcity visit, you will be able to draw from the **SPIRIT** that is a part of our everyday life.

Together we will cry and face fear and grief. I will want to take away your pain, but instead I will sit with you and **TEACH YOU HOW TO FEEL IT**.

We will **LAUGH AND SING AND DANCE AND CREATE**. We will always have permission to be ourselves with each other. **NO MATTER WHAT, YOU WILL ALWAYS BELONG HERE**.

As you begin your Wholehearted journey, the greatest gift that I can give to you is to live **AND LOVE WITH MY WHOLE HEART** and to dare greatly.

I will not teach or love or show you anything perfectly, but I will let you see me, and I will always hold sacred the gift of seeing you. **TRULY, DEEPLY, SEEING YOU**.



**LOVED AND LOVABLE**

**YOU ARE WORTHY OF LOVE, BELONGING, AND JOY**

**COURAGE**

**COMPASSION**

**BOUNDARIES**

**REST AND PLAY**

**ACCOUNTABILITY AND RESPECT**

**JOY**

**GRATITUDE**

**WE WILL LEARN HOW TO BE VULNERABLE.**

**SPIRIT**

**TEACH YOU HOW TO FEEL IT.**

**LAUGH AND SING AND DANCE AND CREATE**

**NO MATTER WHAT, YOU WILL ALWAYS BELONG HERE.**

from *Daring Greatly* by Brené Brown  Copyright © 2020 Brené Brown, LLC.

**NATHAN WALLIS**  
16 NOVEMBER 2020

**CHANGE YOUR BRAIN, CHANGE YOUR LIFE**

**THE ADULT BRAIN**  
MATURES BETWEEN 18-24 yrs (F) and 22-32 yrs (M)

**BIRTH ORDER**  
FIRST BORN DOES BETTER  
FEMALE BRAIN MATURES FASTER  
SUBSEQUENT BIRTH ORDER DOESN'T MATTER  
SO A MALE, NOT FIRST BORN, WITHOUT DIATIC RELATIONSHIP

**SKETCHABILITY**  
80% MALE PRISON POP. (US) FROM FOSTER SYSTEM

**YOUR 4 BRAINS**

- 1 SURVIVAL** (BRAINSTEM)
- 2 MOVEMENT** (CEREBELLUM)
- 3 EMOTIONS** (MAMMAL OR LIMBIC)
- 4 FRONTAL CORTEX**

**IT'S A PATHWAY AS YOU GROW**

**CREATIVE THINKERS ARE PROBLEM SOLVERS**  
ROAD MAP TO: NUM & LIT (123 ABC)

**VOICE ACTIVATED** (4)  
WHAT YOU SAY TO YOURSELF, ABOUT YOURSELF

**EMPATHY SELF CONTROL EXECUTIVE FUNCTION LITERACY**

**ADD YET** TO ANY CAN'T STATEMENT

**DISPOSITION** (ATTITUDES - BELIEFS - BEHAVIOURS)

**RHYTHMIC PATTERN**

**DIADIC RELATIONSHIP** (MOTHER, SOMEONE WHO IS CRAZY ABOUT YOU, OTHER)

**NEUROPLASTICITY**

**4 THINGS YOU PUT IN YOUR MOUTH**

- 1 CUP ✓ GOOD FOR YOU (CAFFEINE)
- 2 CUPS NEUTRAL (ALCOHOL)
- 3 CUPS ✗ DETRIMENTAL (TOBACCO, SUGAR)

**IT'S ALL ABOUT RECEPTORS**

**BUILDING RESILIENCE**

**TO COMBAT DEPRESSION ANXIETY & SUICIDE**

**BUILDING RESILIENT RANGITANI**

**PARENTING STYLES**

- THE BRICK WALL** (TOO RIGID)
- THE JELLY FISH** (BENDS TOO MUCH)
- THE BACK BONE** (RESPONSIVE WITH STRUCTURE)

**HOW TO BUILD IT?**

1yr AT-HOME PARENT, 3yr AVAILABLE GRANDPARENT, BILINGUAL, MEDICAL INTERVENTION

# Bay Music School 2021



**PATHWAY PROGRAM - 2021**

**JOIN THE BAND TODAY!**

Join today by signing up to a registration group at our website  
[www.baymusicschool.co.nz](http://www.baymusicschool.co.nz)  
 or [baymusicschool@gmail.com](mailto:baymusicschool@gmail.com)

**Foundation Course only \$199 per Term**  
 For Ukulele, drums, guitar, singing, bass and more!



## Bay Music School registrations are open for 2021!

The team have opened up more classes at Taumata School which means you can join the band today!

The Foundation course is designed to cater for any level to join, from Year 1 - 8, and to learn the basics of beat, ukulele, and drums, while performing songs.

Bay Music School have also developed a pathway program to allow our Tamariki to progress from the foundation level all the way to an independent rock band!

Classes are during school time.

Register:  
[www.baymusicschool.co.nz/register](http://www.baymusicschool.co.nz/register) or email Adam McLean [baymusicschool.co.nz](mailto:baymusicschool.co.nz)



## AIR TRACK TUMBLE CLASS TAUMATA SCHOOL

*Beginner and advanced classes for all school years*



Term  
1

**Friday 19th Feb - 16th April**

**7:30-8:30a.m in school hall**

for 9 weeks with a graded certificate

\$125

Book online at

[www.thegymnasticacademy.com](http://www.thegymnasticacademy.com)

Call Marie **0211705426**  
for more information

## Do You Need Help? Hero Help & Information Session

Having issues with Hero?  
Not sure the best way to use Hero?

Get sorted with Hero and be ready for 2021!

If you are having Hero issues, bring your device and meet with Mike

**Friday 4 December, 8am**  
in the Staffroom.





Auckland Anniversary: Monday 1 February  
 Office Open: Tuesday 2 February  
 Staff Only Days: Tuesday 2 & Wednesday 3 February

**Term One: Thurs 4 Feb - Fri 16 April (10 weeks)**

- Waitangi Day: 8 Feb (school closed)
- Easter Friday: 2 April (school closed)
- Easter Monday - 5 April (school closed)
- Easter Tuesday - 6 April (school closed)

**Term Two: Mon 3 May - Fri 9 July (10 weeks)**

- Teacher Only Day: 4 June (school closed)
- Queen's Birthday: 7 June (school closed)

**Term Three: Mon 26 July - Fri 1 Oct (10 weeks)**

- Teacher Only Day: 27 August (school closed)

**Term Four: Mon 18 Oct - Thurs 16 Dec (10 weeks)**

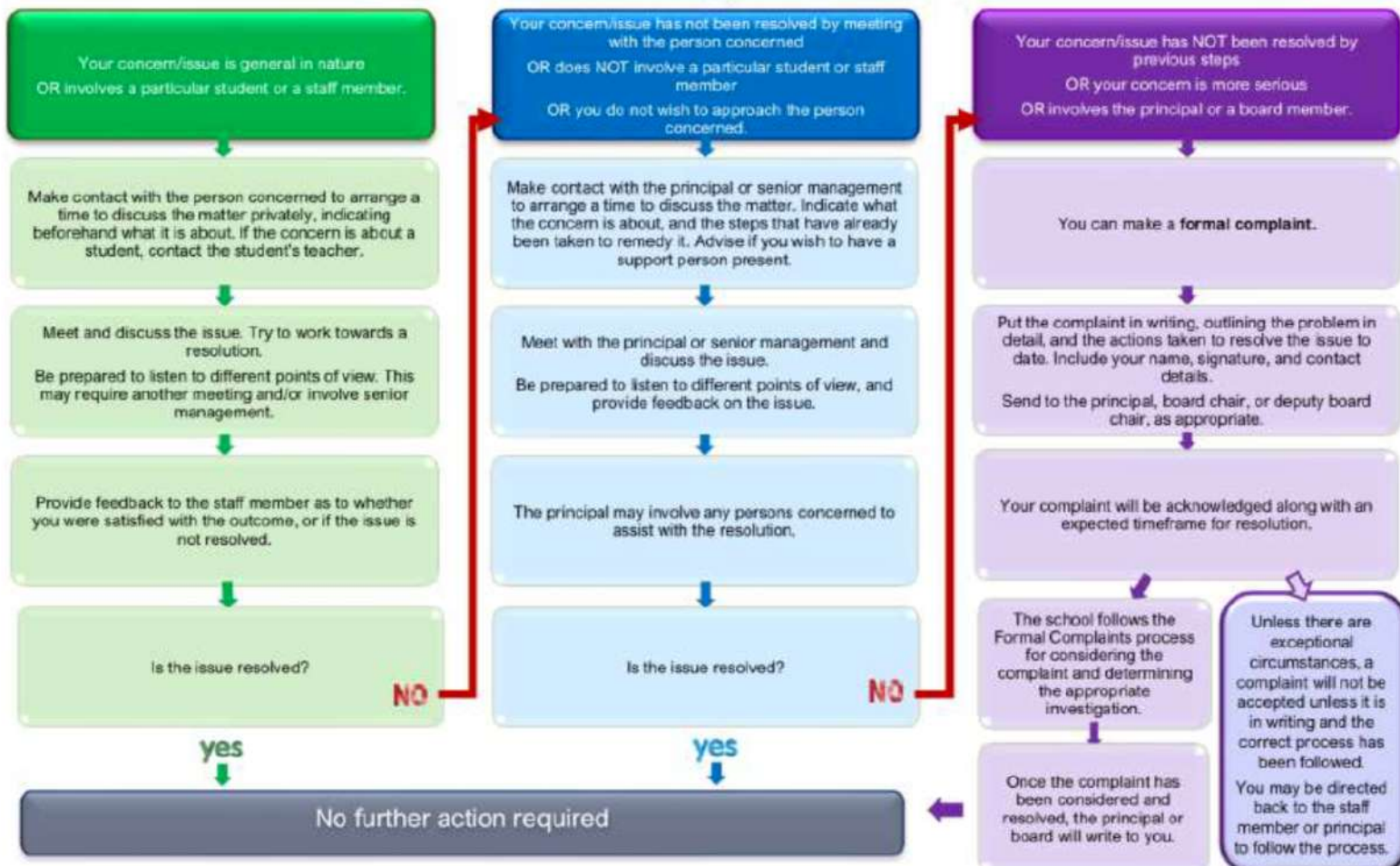
- Labour Day: 25 October (school closed)

There is still one additional Kahui Ako Teacher Only Day to allocate.



## Channels for Communication:

Most concerns can be resolved informally by discussions with the people concerned.



This flowchart aligns with the school's Concerns and Complaints policy and procedures.