

# TAUMATA SCHOOL



## Key Dates:

- **17 November:** Western Cluster Athletics
- **18 November:** RRR Fundraiser - Mufti Day
- **18 November:** Taumata 101 Information Evening 5.30 - 6.30
- **19 November:** Visiting Establishment School - Tamaoho School (Auckland)
- **24 November:** Whānau Rōpū, 7-8.30pm
- **24 November:** Matarawa Athletics Day
- **26 November:** 2pm - 7pm Learner / Learning Coach Conferences - book via Hero
- **27 November:** Orange Day
- **30 - 3 December:** ERO review
- **3 - 4 December:** Yr5&6 Bikes in school
- **8 December:** Mauao Athletics Day (postponement day 9 Dec)
- **15 December:** Last day of term, 12.40pm end of day finish

## Message from the Principal:

*Principal Gen Fuller*

Nga mihi whanau.

Recently a group of excited visitors to our school asked the question "What makes this organisation GREAT?" The question was genuine and anticipation for the magic response evident. With only a few moments to reflect the response was easy to articulate - "we as an organisation and community have clearly articulated beliefs and views about learning and therefore work hard to cultivate the required culture to support those views and beliefs." You see effective organisations have a common foundation - culture and commitment! A shared purpose and then a desire to create the kind of culture that allows EXTRA-ORDINARY things to happen.

As a learning school we acknowledge that we won't get everything right 100% of the time. Additionally as we grow we know we must keep revisiting our vision to ensure we remain true to what our community desires. Ames Kerr in a recent book references "Legacy" - the need to be a good ancestor.

As leaders, learning coaches, parents, whanau and community we all have a vested interest in shaping a legacy for Taumata School that stretches well beyond the here and now and into the future. We are charged with shaping a legacy for others who venture onto this pathway and our one job is to leave this school in a better way for the future.

## Continued...

The last fortnight continues to provide authentic learning opportunities for our children. Swimming, Athletics, Kapahaka performances, presentations - all interwoven with the regular foundation building skills of Reading, Writing and Mathematics. The end of the year continues to snap at our heels as we wrap up reporting, parent communication and strategic planning for next year. We continue to problem solve our rapid roll growth, property challenges and evidence gathering to inform programmes of learning we engage in next year.

**BE A GOOD ANCESTOR...  
TAKE UP THE WERO (CHALLENGE)  
TO LEAVE THIS PLACE IN A  
BETTER WAY FOR OTHERS....**

Finally, we all wait in anticipation for updates on property and in particular the Stage 2 build. At this stage it is unlikely that any groundworks will begin before the summer holidays, which on one hand minimises disruption for our learners, but on the other further delays the build programme.

We eagerly wait an update in the coming weeks, but wish to assure you that the leadership, learning coaches and BOT are planning for all scenarios, and will ensure appropriate learning environments for 2021.

I want to thank you, as our community, for your ongoing support and the desire to partner with us in your child's learning journey. I also wish to acknowledge our team who continue to provide such real, relevant and focused learning opportunities for our children.

## Springboard Trust



This year, our Principal Gen Fuller has been involved in the Springboard Trust Strategic Leadership for Principals Programme. This ten month programme involves a select group of Principals who work with expert partners to explore core elements of deliberate, intentional and strategic leadership for their school and community. This year Gen has been working with capacity partner - Alex Dickson (ASB) and under the guidance of Hilary Tomkin, Kevin McDonald and Dianne Smardon. The outcomes include a coherent strategic plan with clear goals, initiatives, measures of success and desired outcomes.

Our BOT wish to acknowledge Springboard Trust for this wonderful opportunity to grow leadership within and across our school at a pivotal time in the history of our school.

## Last Day Term 2020

Thursday

15 Dec

12.40pm finish



## From the Board of Trustees...

Earlier this week the leadership presented student achievement and performance data for 2020.

Whilst our school values so much more than Reading, Writing and Maths; it is important to ensure we are meeting national guidelines and preparing our children for the future as literate, numerate members of society. As a BOT we were blown away and absolutely overwhelmed by the fantastic results achieved by all learners. We felt totally reassured and proud that each and every one of our learners are receiving a 'world-class, personalised' education right here at Taumata School. What our children are receiving is an education that is tailored to each one rather than one size fits all.

The primary function of the BoT is to ensure that each child is getting the very best education and we are confident in this. Please join me in congratulating your learning coaches on these great results.

I was also really excited about some of the new initiatives being explored next year at Taumata school. These are cutting edge programmes like the Science of Reading which will enable our learning coaches to help all our learners unlock the code to reading.

On Friday the BOT met with a local landscape architect to plan and continue the design of our learning campus. We feel it is important to develop a comprehensive plan for the site where things flow and are relevant to our values. Please complete the survey circulated last week via HERO so we can hear your thoughts. Phase 2 construction is still a while away, and currently the school leadership are making decisions around how we will meet the needs of learners as we move forward - the use of spaces and learning coaches for 2021 will be communicated before the end of the year.

A special thanks must go to our Whanau Ropu who organised a wonderful community event - Quiz night. What an amazing event and there was significant money raised that will support the ongoing development of our school. Thanks to all involved.

Finally, the BOT is responsible for reviewing the performance of the Principal annually with the objective of ensuring high quality education opportunities for Taumata students. This year we contracted Ken Ward - Leading Learning. Firstly thank you to those who contributed to the 360 degrees feedback of Gen Fuller, which includes students, staff and BOT. The process was robust, and informative and extremely positive about our Principal's leadership.

Have an enjoyable weekend everyone.

**Tom Roberts**

*Board of Trustees Chairman*

## Achievement Data 2020

**READING**  
**88%**



Working AT or ABOVE expected levels of New Zealand Curriculum

**WRITING**  
**80%**



Working AT or ABOVE expected levels of New Zealand Curriculum

**MATHS**  
**81%**



Working AT or ABOVE expected levels of New Zealand Curriculum

## Principles for Learning...

As a school we consider Reading, Writing and Mathematics as 'BAU - business as usual'. These skills and competencies are the foundation for Empowered Learning for Life. In addition to these we value these principles...

COLLABORATION



CREATIVITY



AUTHENTIC LEARNING



LEARNER AGENCY



GRIT



COMMIT: PERSEVERE & SUCCEED

## Achievement Data 2020

We are committed to accelerating the learning for those children working BELOW expected levels. Many of those identified in mid year data have shown accelerated progress.

**READING**  
**73%**



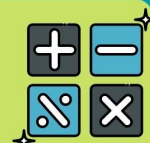
Made ACCELERATED progress

**WRITING**  
**53%**



Made ACCELERATED progress

**MATHS**  
**48%**



Made ACCELERATED progress

\* Accelerated means more than one years progress



## Coming 2021

CHECK OUT THE NEWLY DESIGNED PHYS ED TOPS. THESE WILL BE MANDATORY FOR YEAR 5-8 & OPTIONAL ACROSS THE REST OF THE SCHOOL.



## Dramatic News



A HUGE congratulations to **Sam and Riley Hellund** for excelling in their October Trinity College, London Speech and Drama exams. We are so proud of your efforts – well-done all.

Gentle reminder: Speech and Drama Enrolment forms for 2021 and Year 6 – 8 Speech and Drama Scholarship Applications are due into the school office **BY 25th of November**.

If you need to pick up a form, these are available at the office. Scholarship awardee will be announced at the end of year .

Auckland Anniversary: Monday 1 February  
Office Open: Tuesday 2 February  
Staff Only Days: Tuesday 2 & Wednesday 3 February

### Term One: Thurs 4 Feb - Fri 16 April (10 weeks)

- Waitangi Day: 8 Feb (school closed)
- Easter Friday: 2 April (school closed)
- Easter Monday - 5 April (school closed)
- Easter Tuesday - 6 April (school closed)

### Term Two: Mon 3 May - Fri 9 July (10 weeks)

- Teacher Only Day: 4 June (school closed)
- Queen's Birthday: 7 June (school closed)

### Term Three: Mon 26 July - Fri 1 Oct (10 weeks)

- Teacher Only Day: 27 August (school closed)

### Term Four: Mon 18 Oct - Thurs 16 Dec (10 weeks)

- Labour Day: 25 October (school closed)

There is still one additional Kahui Ako Teacher Only Day to allocate.





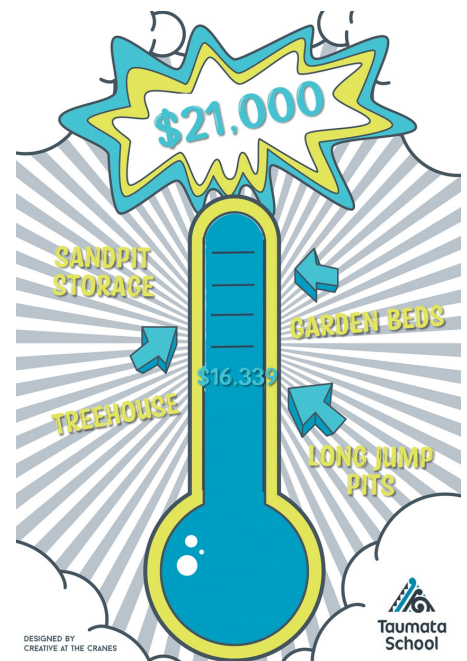
## Whanau Rōpū Update

**Quiz Night:** What a huge success! Over 220 people turned up for a night of laughs and fun and a whopping \$12,000 raised for the school!

**Sponsors:** It's been a tough year for a lot of business and families so we have been truly blown away at the generosity of local businesses. Thank you! A list of local businesses who have supported us over term 3 and 4 is below (see logos) or for a full list check out the Taumata Friends and Family facebook page.

**Spending:** Take a look at the thermometer to see what projects we've completed this year and what we have left in the PTA account. Keep an eye out in the next few weeks for an opportunity to suggest ideas on what the next big project should be.

The Whanau Rōpū just want to take the time to thank the school community for helping out with events, pitching up to things we've organised and supporting us in the many other ways you do. It's been a great year - thank you from all of us on the team.



**A huge thank you to our sponsors**

WITH THEIR SUPPORT WE HAVE BEEN ABLE TO BUILD AND FILL GARDEN BEDS, MAKE LONG JUMP PITS, AND HAVE AN ONSITE WORM FARM. WHAT AMAZING LEARNING OPPORTUNITIES FOR OUR STUDENTS!!!

Thank you for supplying Taumata School with:

- Timber for vegetable garden beds and long jump pit
- Nutritious organic fertiliser for sustainable gardening
- Premium Garden Mix to fill the beds as well as some organic compost
- A worm farm
- Selection of easy to grow seeds

Environmental Fertilisers Beyond Organics  
Tauriko Sawmill & Timber Supplies  
tui  
KINGS Seeds the seed people  
Dalton's Keeping New Zealand Growing

## Lost Property

With all the activities that have been taking place during this busy term, there is a lot of lost property.

Please check the lost property boxes in each of the hubs.

**NAME** everything which will help us get items back to your child.



# Christmas

## At The Lakes

# 2020

Supported by

Sunday  
22nd of November  
from 2pm to 6pm  
at  
**Koikoi Reserve**  
Double Bay Road  
The Lakes  
Pyes Pa

Brought to you by:

**Pyes Pa Tauriko Lions**  
Our Pride, Our Community

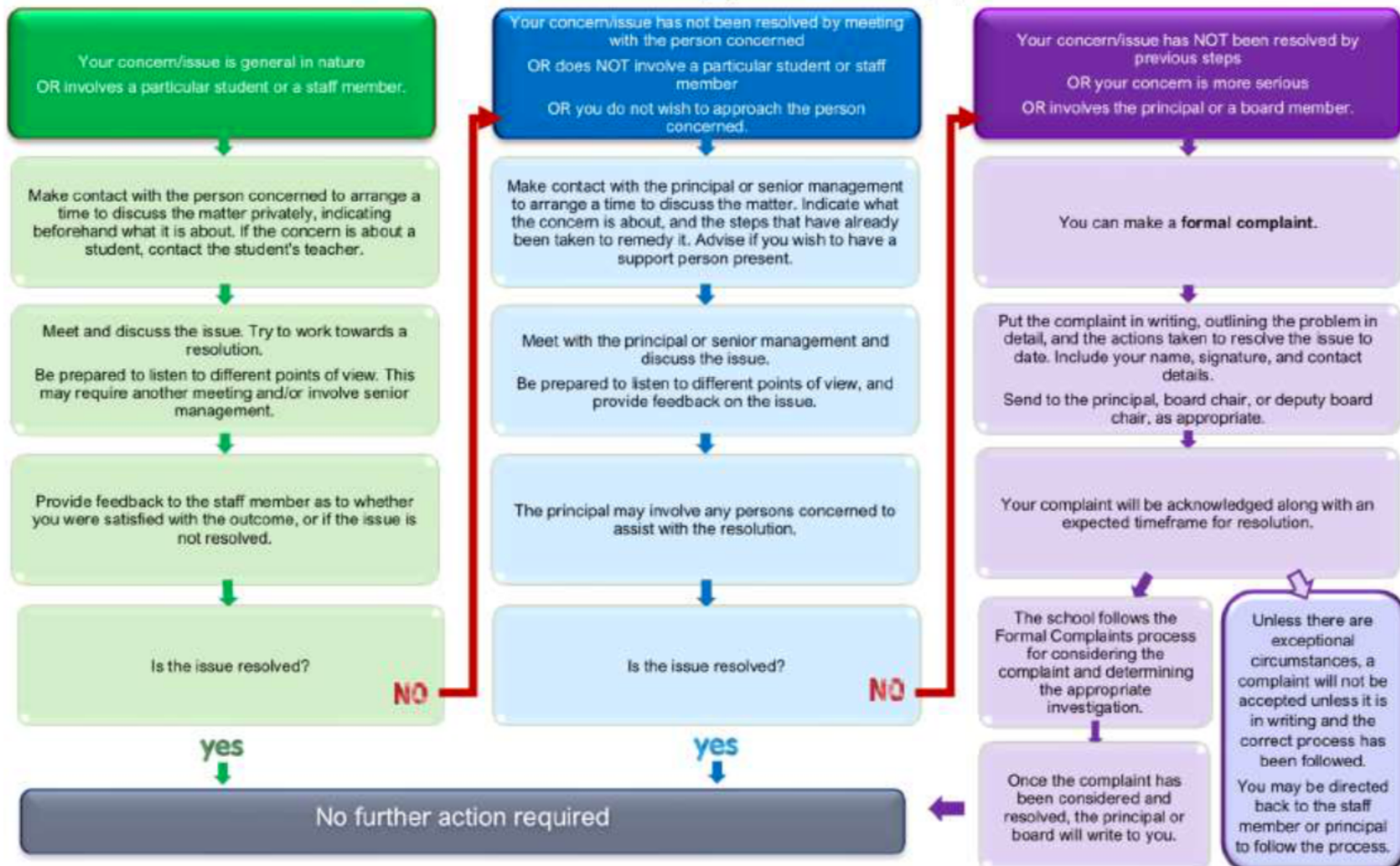
Follow Us on Facebook  
for the latest updates

Rain Date - 29th of November

Please Note: This event will only proceed subject to any Covid 19 restrictions in place at that time.

## Channels for Communication:

Most concerns can be resolved informally by discussions with the people concerned.



This flowchart aligns with the school's Concerns and Complaints policy and procedures.