

TAUMATA SCHOOL



Key Dates:

- 25 JUNE: LEARNING CELEBRATION HUI - SCHOOL FINISHES EARLY
- 3 JULY: LAST DAY OF TERM 2
- 20 JULY: TERM 3 STARTS

Message from the Principal:

Genavier Fuller

Nga mihi nui whanau

This week we head into Week 11 of term 2 and whilst the first third of the term looked quite different (under COVID-19 alert conditions) the return to school saw enthusiasm, excitement and a genuine sense of accomplishment. This last week we have noticed energy levels fading; particularly as students and learning coaches succumb to seasonal coughs and colds; fatigue and mid-winter days. With only two weeks to the end of the term we know that the term break is near, but there is much to achieve - particularly in achieving designed learning outcomes and also reporting to parents/caregivers on student progress to date.

This week we have our learning celebrations; and at the time of writing we have 248 bookings (68%). These learning celebrations are a valuable means of sharing and celebrating learning progress to date. The format of the celebrations involve all stakeholders (parents, your child and their learning coach) sharing progress against the curriculum levels, progress to date and how you can assist at home. If you haven't had a chance to book in with your child's learning coach please see the details shared via your HERO account to secure a spot; or send an email to your child's learning coach. We do set a lofty goal of 100% engagement and therefore ask for your support in achieving this goal.

Springboard Trust

As Principal of Taumata School I am fortunate to be one of 6 local Principals selected to take part in Springboard Trust: Strategic Leadership for Principals Programme 2020. This programme involves a small group of Principals working alongside capacity expert partners from the business world to plan strategically, identify critical success factors and streamline key aspects/areas that will ultimately impact student achievement and learning.

Throughout COVID lockdown we met online via zoom looking at school vision, principles for learning, 3 year strategies and consultation with stakeholders. On Friday our most recent focus was developing a coherent 3 year outlook, identifying programmes of work and determining success factors. Over the coming months the leadership team will be collating data, drawing on consultation material and reviewing our current strategic plan. These reviews will support our evaluation of how well we are serving your children, our community and how well we empower our children to learn for life.

This programme is an exciting initiative that will feed into the overall direction of Taumata School alongside the Boards strategic vision for our school; and your input as our community. On Friday each Principal participant received a small handmade helicopter with a key message that "Strategy is about rising above the 'day-to-day' and taking a helicopter view of the big picture". This is true of any organisation - big picture visioning must lead the way.



Message from our Board Chair:



Kia ora everyone

We would like you to join us in welcoming Kelly Quin on to our Taumata School Board of Trustees. Kelly brings a huge amount of valuable experience from her time as Chairperson; Board at St Mary's Catholic School. The Board of Trustees has been busy lately, mostly planing for the phase 2 build that will see our roll grow from 400 to 650. I think we have all been surprised by how quickly Taumata has grown. We had a helpful meeting with the Ministry of Education at the beginning of last week to discuss the growth at Taumata. As soon as we know where and when the phase 2 build will happen, I will let you know! I can tell you that the new building will be of single storey construction, probably about 1.5 times the size of the existing Puwhenua block. Even after the careful research into the option of a two storey build we have been informed that budgets will prevent that solution.

In addition to this the Board of Trustees is also investing time into a detailed masterplan of our site, two short term projects we are exploring are a senior playscape and Pou Whenua to mark our entrance to the school.

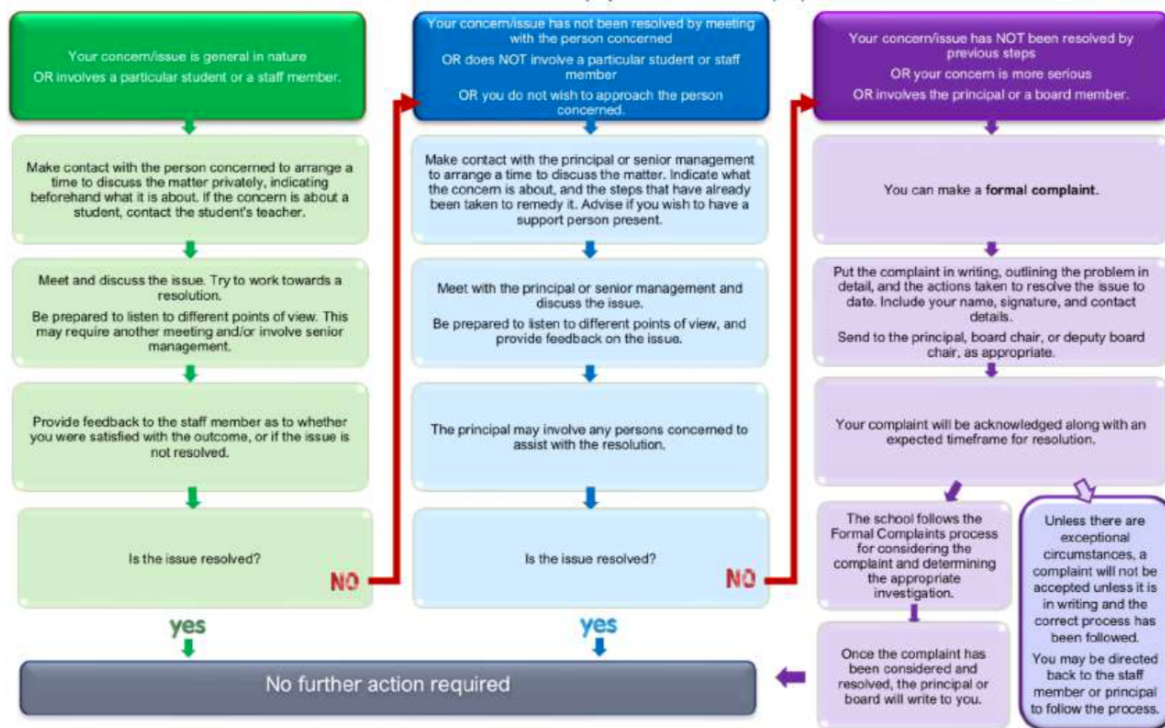
Lastly, it was great to see the whole school involved in the School Cross Country on Wednesday (well done whoever booked the weather), there was so much Grit, participation and success on display. A very special thanks to Graham Higham for all the care and hard work he puts into the school grounds. Enjoy the last couple of weeks of school and feel free to talk to any of our members about the exciting roles we are involved in.

Tom Roberts Taumata School Chairperson of the Board of Trustees

Channels for Communication:

Concerns and Complaints Process

Most concerns can be resolved informally by discussions with the people concerned.



This flowchart aligns with the school's Concerns and Complaints policy and procedures.

Page 10 of 10



Please follow these simple rules:



Tell us your plans early

- Let us know early that your child will be attending so we can plan for them.



Essential visitors only

- Please ensure your visits to the school or early learning service are essential.
- Use the sign-posted entry point.



Drop off and pick up your child at the time you are given

- Your early learning service or school may require you to drop off or pick up your child at a particular time.
- Please help with staggered arrival and pick up times, if required.



Record your visit in the register

There are two registers:

- Visitor register** – All site visitors must be recorded in the visitor register, which will record your name, time in and out, date, phone number and physical address. This assists with contact tracing if necessary.
- Contact tracing register** – Your school or early learning service also keeps a register that identifies which children and adults are in each teaching space.



Maintain a 2 metre distance at all times

- Keep any on-site visit short.
- Maintain a 2 metre distance from those who are not part of your household, workplace or school bubble.



Sick children must stay at home

- Please keep children at home if they are sick. A sick child will be sent home.
- If your child is at higher risk of severe illness from Covid-19, they must stay at home.



Practice good hygiene

- Wash and dry your hands, cough into your elbow, don't touch your face.
- There's hand sanitiser available around the school or early learning service. Please use this if you touch surfaces.



Covid-19 cases

- You will be advised if your school or early learning service is connected to a confirmed or probable case of Covid-19. You will be advised of any actions to be taken.
- The site must close for 72 hours to allow contact tracing and cleaning. They may be physically closed for a further 14 days.